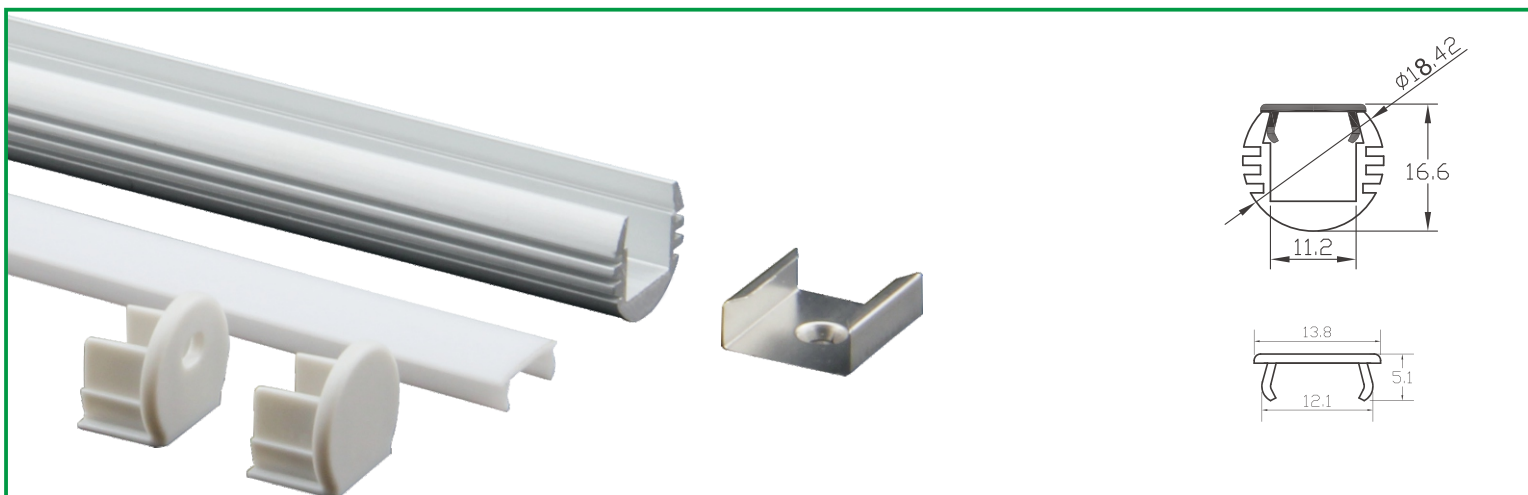
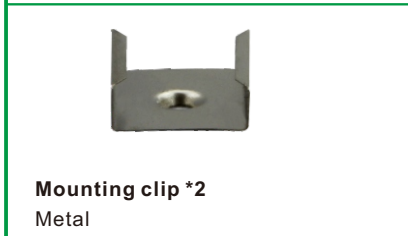
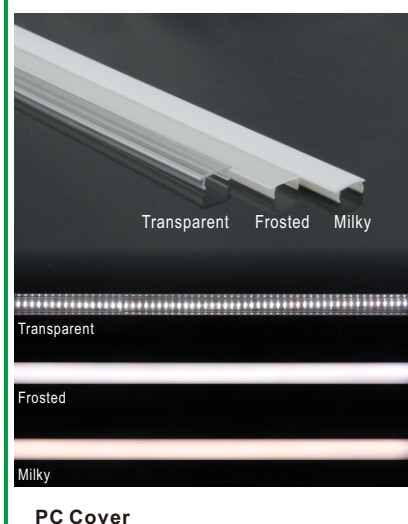


Surface Mounting LED Aluminum Profile-A1818



Customized Color can be ordered



Material	Body-Aluminum, Cover-Polycarbonate(PC), End cap-Polycarbonate(PC) Stainless Steel Mounting Bracket.
Lighting Transmittance	Transparent, Milky, Frosted Cover.
Operating Temperature Range	-30°C - 60°C(-22°F~140°F)
Flammability	UL94-V2
UV Stability	Ageing resistance
Heat Stability	Under 100°C
Grade of Aluminium	6063-T5 Anodizing

Service Environment and Installation:

With clip

