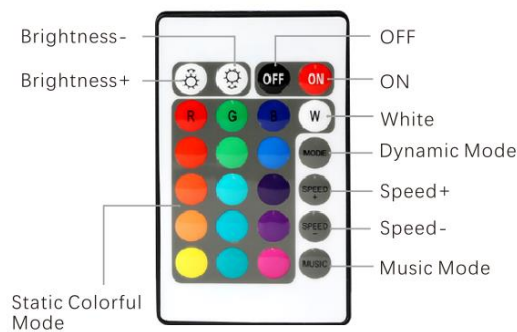


12~24V RGB Light strip(WiFi)



1. Product Description



(1) Controller Mode button (press this button to switch mode)

List of 8 modes of the Mode button:

1.Static red light

- 2.Static green light
- 3.Static blue light
- 4.Static white light
- 5.Music mode
- 6.Colorful jump mode
- 7.Colorful gradient mode
- 8.Red light gradient

(2) If using 24-key infrared remote control, there are 20 modes (16 monochrome mode + 3 dynamic modes + music mode). Remote control distance: linear distance 7M, remote control angle 120 degrees, remote control, please control Infrared receiver of the device;

(3) When using the App interface control, there are 6 modes (5 dynamic modes + music mode);

(4) There is power-off memory function memory, that is, when the power is turned off or turned on again, the light strip will automatically restore the light state before the shutdown.

2. Product Specifications

Model NO: FRGB30A-12V-5M-WIFI/ FRGB30A-12V-10M-WIFI

Working voltage:DC12~24V

Max current:6A

Radio frequency standard :Wi-Fi802.11b/g/n

APP Compatible:IOS /Android

Control Method:App/Voice Control /Remote control

Features: With voice control function, using high-sensitivity external pickup microphone, the light follows the sound or the music rhythm changes synchronously

Controller Dimension:55*37*19mm

Controller weight:31g

Controller Material:ABS

Remote control Dimension:85*52*8mm

Remote weight:19g

Reliable:CE/ROHS/FCC

Packing list:controller + remote control + double-sided tape + pin + manual + electrostatic bag

3. Function Description

1. Support local control on the app via LAN (offline control)
2. Support remote control on the app
3. Support voice control by mainstream smart speaker
4. Support local on/off control via wireless network
5. Support firmware upgrade
6. Support multi-language switching
7. Support sharing with home members
- 8.Support group control

9. AP network configuration mode (significantly improving the network configuration success rate)
10. Real-time device status feedback
11. Smart scene control
12. Adjustable brightness
13. 16 million RGB colors
14. Support multiple dynamic modes
15. Power-off memory
16. Control button on the controller
17. Support remote control

4. IoT Life App Usage

4.1 Download the IoT Life app

- (1) For Android systems, download IoT Life app from the Android market.
- (2) For iOS systems, download IoT Life app from the App Store.
- (3) Scan the QR code to download the app.



Scan and download the app

4.2 Registration and login

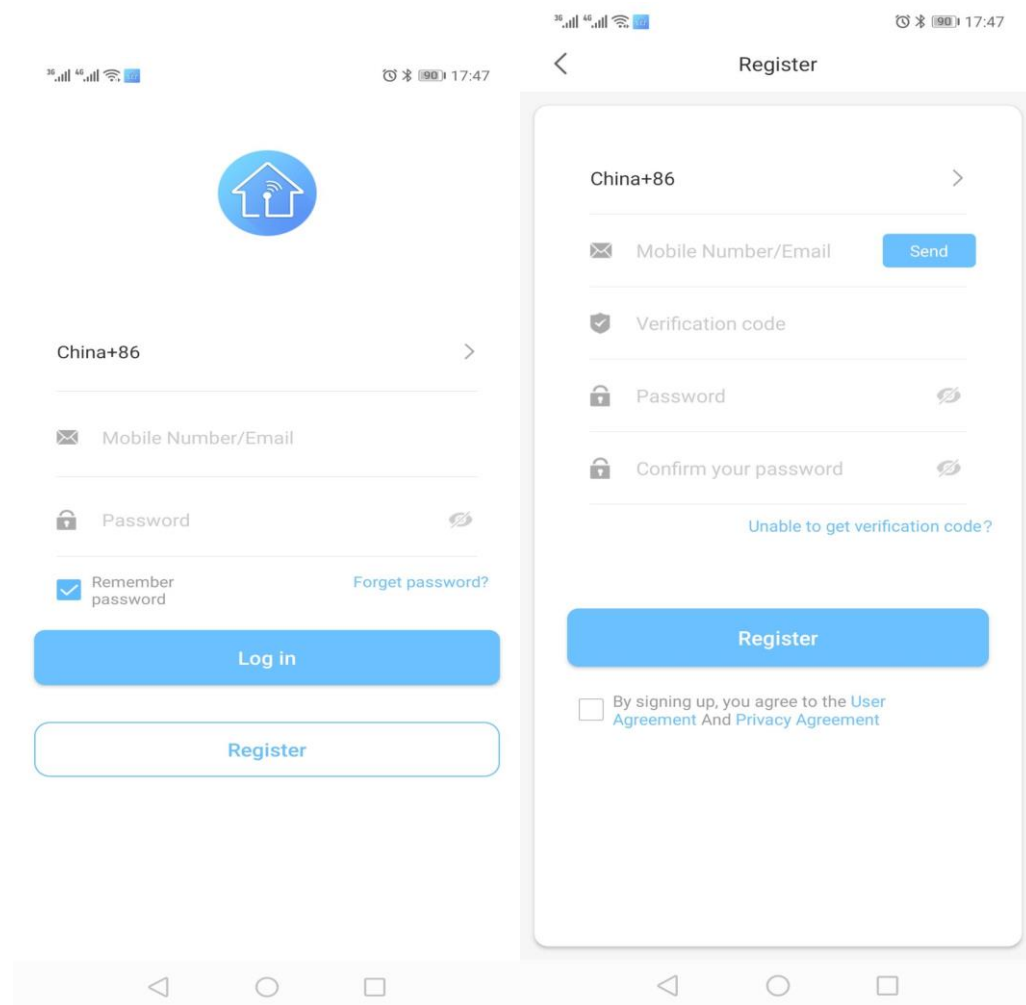
Currently, you can register with the app using mobile number or email address (the system automatically identifies your current country/region. If you switch the country/region, you need to re-configure the network of all devices). The procedure is as follows:

- (1) After the app is successfully installed, tap the app icon to enter the login screen.

(2) On the login screen, tap "Register". On the registration screen, enter the mobile number or email address. After obtaining the verification code, set the password.

(Note: It is recommended that you use the Gmail to register a Google Home account for smart device control.)

(3) After successful registration, enter the account number and password to log in to the app.



4.3 Add a device (Android system)

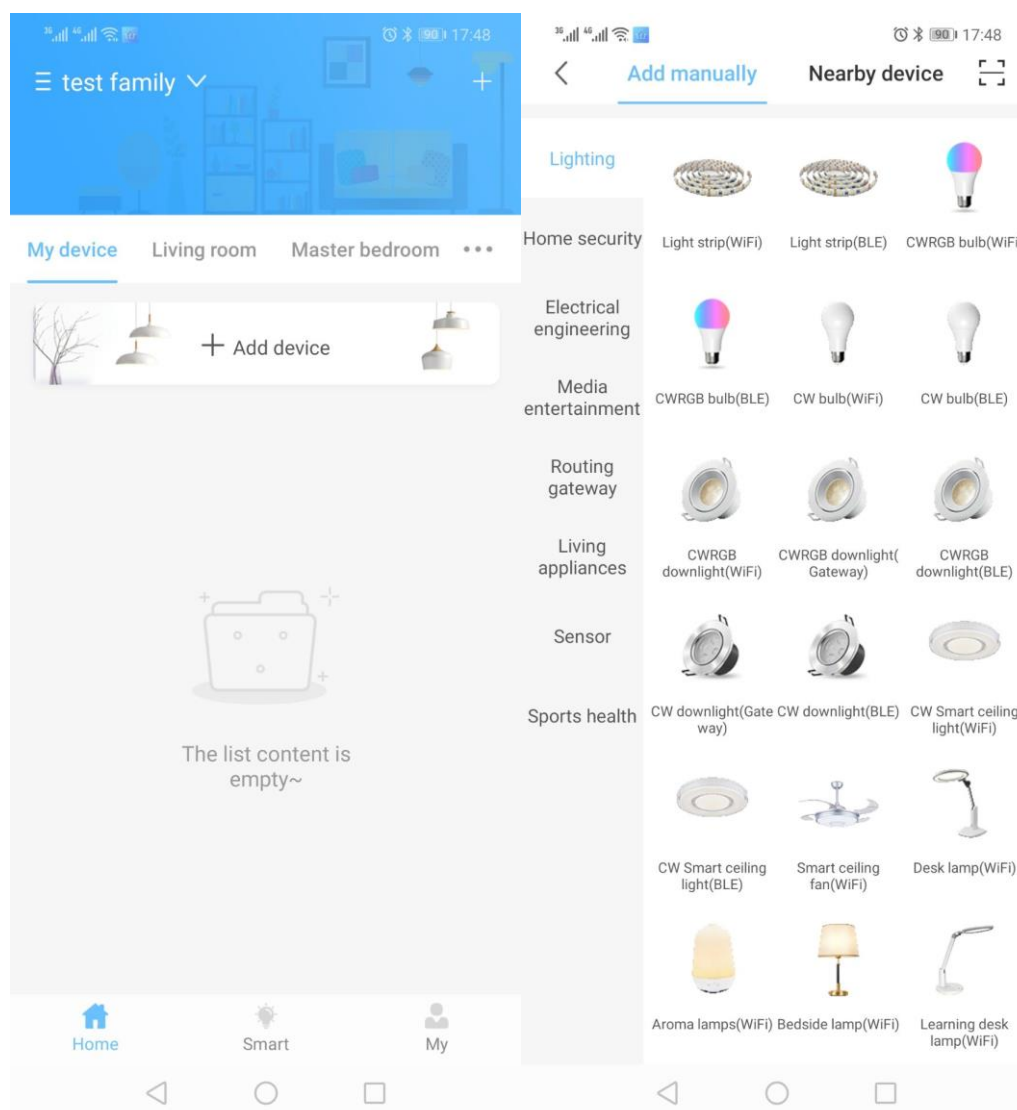
After login, tap the "+" icon in the upper right corner of the home screen to add a device in any of the following modes (if Bluetooth or Location is disabled on the mobile phone, turn it on):

(1) Manually add a device.

(2) Discover a nearby device. (Note: This function is unavailable in iOS systems.)

(3) Scan the QR code to add a device. (On the device adding screen, tap the scan icon in the upper right corner and scan the QR code attached on the device to add it.)

Remarks: Only one account is allowed to configure the network of the device. If the device needs to be configured by another account, restore it to the factory settings.



The Wi-Fi device supports two network configuration modes: default mode and compatible mode.

4.3.1 Default mode

(1) Taking the manual add mode as an example, tap "Add Manually" and select a **Light strip(WiFi)** option from "Lighting", set the device in the network configuration state as prompted by the configuration wizard, and tap "**Confirm light strip Twinkle**" to enter the network configuration state. (Remarks: Only 2.4G Wi-Fi network is supported for network configuration.)

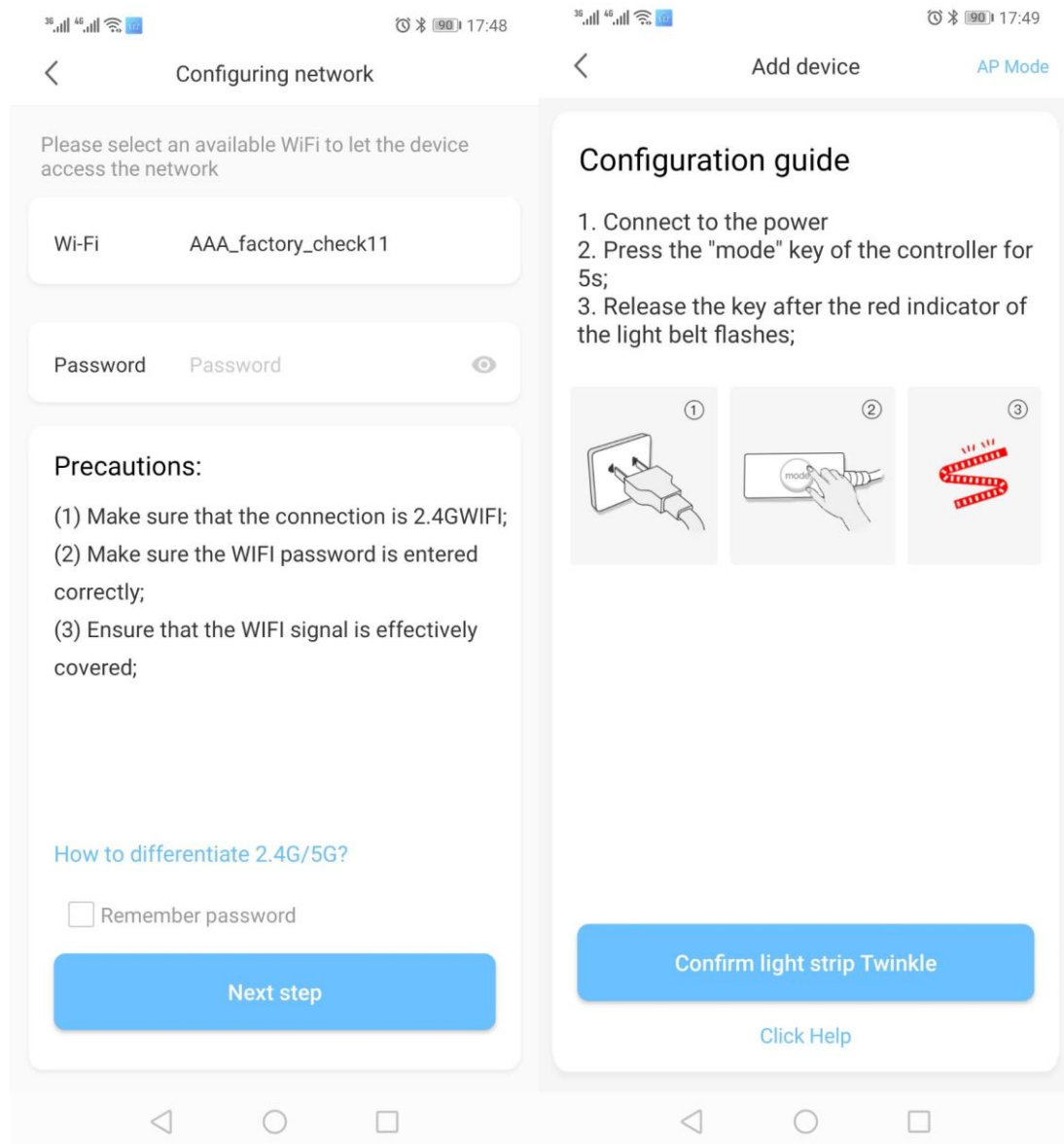
(2) After the network is successfully configured, you can perform operations on the device. If the network configuration fails, identify the fault as follows:

A、 Check whether the device is energized.

B、 Check whether the device and the mobile phone are within the Wi-Fi network coverage. The stronger the signal strength is, the easier the configuration is.

C、 Check whether the Wi-Fi network is input correctly.

D、 Try again or use the compatible mode.



4.4 .2Compatible mode

(1) Tap "AP Mode" in the upper right corner to enter the compatible mode screen. Restore the device to the factory settings as prompted by the wizard, and tap "Make sure the light is steady blue".

(2) Connect the device hotspot (as shown in the figure below) on the Wi-Fi settings screen. After the connection succeeds, go back to the device hotspot connection screen to configure the network. If the mobile phone is not connected to the previously

mentioned Wi-Fi network, go to the Wi-Fi settings screen to set the Wi-Fi network and then go back to this screen. (For iOS systems, manually open the Wi-Fi settings screen, set the Wi-Fi network, and then go back to the app screen.)

(3) After the network is successfully configured, you can perform operations on the device. If the network configuration fails, identify the fault as follows:

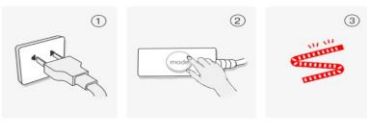
- A、 Check whether the device is energized.
- B、 Check whether the mobile phone and the device are within the Wi-Fi network coverage. The stronger the signal strength is, the easier the configuration is.
- C、 Check whether the re-connected Wi-Fi network is the one previously configured.
- D、 Try again or check whether the Wi-Fi network is input correctly.

17:49

Add device AP Mode

Configuration guide

1. Connect to the power
2. Press the "mode" key of the controller for 5s;
3. Release the key after the red indicator of the light belt flashes;



Confirm light strip Twinkle


Click Help

17:49

AP Mode

Configuration guide

1. Connect the power supply;
2. Short press the "mode" button on the controller and the color of the light will switch to green;
3. Press and hold the "mode" button on the controller for more than 10 seconds; (ignore the flashing red light)
4. Release the button after the light with blue light is on;



Make sure the light is steady blue

17:49

Connect device hotspot

Configuration guide

1. Please connect the phone to the hotspot shown below;
2. After the connection is successful, return to the APP to configure;



Connect device hotspot

17:49

WLAN

WLAN

AVAILABLE NETWORKS

- AAA_factory_check11
Connected (average quality)
- AAA_factory_check
Disabled
- Xiaomi_706F
Saved, encrypted (available)
- TP-LINK_5G_DB55
Open (available)
- _MIR3
Saved, encrypted (no Internet access)
- GP_Test 2.4G
Saved, encrypted (no Internet access)
- NVC_01_0002_01_235E_020000_00
Saved (no Internet access)
- SYKJ_01_0002_01_0CE3_020000_00
Saved (no Internet access)
- _MIR3_5G
Encrypted (WPS available)
- _TP-LINK_8D80D0
Encrypted (WPS available)

4.4.3 Create Group

(1) Click "Create Group" in the setting interface, check the devices you want to control in the group (only control similar devices). After saving successfully, you can control the devices in group.

(2) In group control mode, if you want to control a single device, method 1: move the single device to another room for single product operation; method 2: directly click the corresponding device in the group management list to enter the device control interface.

(3) To disband the group, click "..." on the upper right to enter the setting interface and click "Dissolve Group". The devices in the group will release the group.

4.4 Device control

4.4.1 Device operations

After the device is successfully configured, enter the device control screen. To modify the device name, tap "..." in the upper right corner and then set the device name. If you delete the device, it restores to factory settings.

4.4.2 Firmware upgrade

Firmware UpgradeApp supports remote upgrade of device firmware, enter the App control interface of the device, click "..." on the upper right to enter the setting interface, if it is not the latest version, please update the version.

4.5 Home on the bottom navigation bar

On the home screen of the app, tap "My device" to list added device. Tap a device icon to enable or disable the device. To enter the device controls screen, tap any area outside the device icon. (You cannot perform operations on the device if it is offline. Please check the device connection status.)

4.6 Smart on the bottom navigation bar

Smart options include "Recommend" and "My".

4.6.1 Recommended

There are 3 recommended modes for you to conveniently create smart scenes: Home, Outside, and Sleep.

4.6.2 My

On the Smart screen, tap the "Add Scene" button or "+" icon in the upper right corner to add a scene in one-click mode or automatic mode.

4.6.2.1 One-click Execution

- (1) Tap "One-Click Execution" and select a desired device.
- (2) Enter the scene name, set the device execution state, and select "Open", "Close", or "On or Off". (You can tap "Add Action" to continue to add devices. To display the scene on the home screen, enable "Home Page".
- (3) After the scene is successfully saved, it is displayed on the scene list. You can manually tap "Execute" to trigger the scene.

4.6.2.2 Intelligent automation

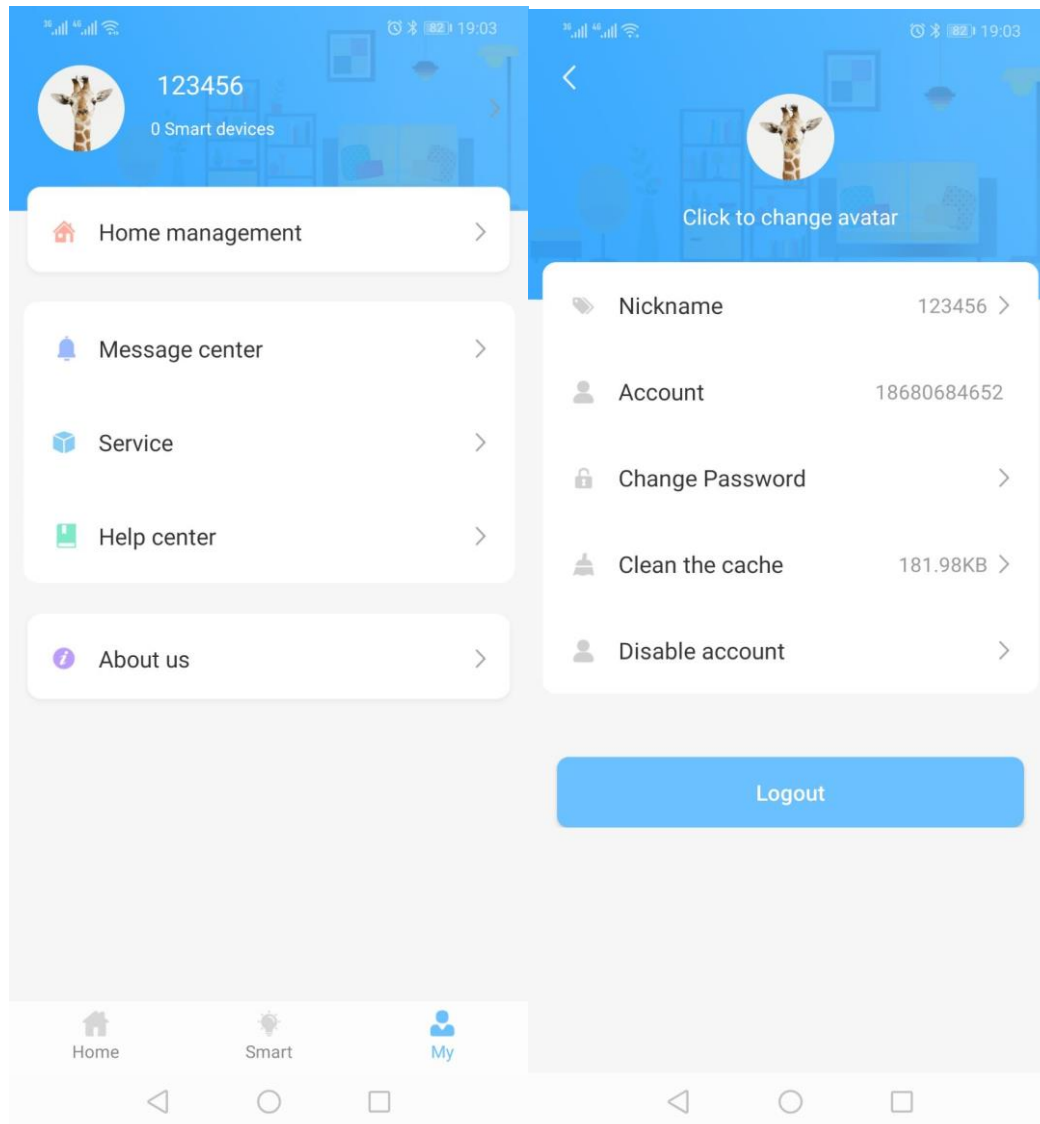
- (1) Tap "Intelligent Automation" to enter the scene adding mode. Enter the scene name and set the execution conditions and actions.
- (2) Set the execution conditions: Click the "Add Condition" button and select the conditions you need to meet the trigger scenario: timing, device and device status; (choose "On" and "Off"), support multiple conditions to meet any one or all Conditional execution scenario;
- (3) To set execution actions, tap "Add Action", select the device, and set the device status ("Open", "Close", or "On or Off") after the scene is triggered.
- (4) After the settings are successfully saved, the scene is displayed on the scene list. If the scene is not required, disable it. You can tap a scene icon to modify the scene.

Remarks: The scene in intelligent automation mode cannot be displayed on the home screen.

4.7 My on the bottom navigation bar

4.7.1 Personal information

Tap the account name to set the nickname and avatar, change the password, or log out.



4. 7. 2Home management

4. 7. 2. 1Add a home

Tap "Home management" and "Add" in the upper right corner to add a home. By default, a home is created by the system.

4. 7. 2. 2 Room management

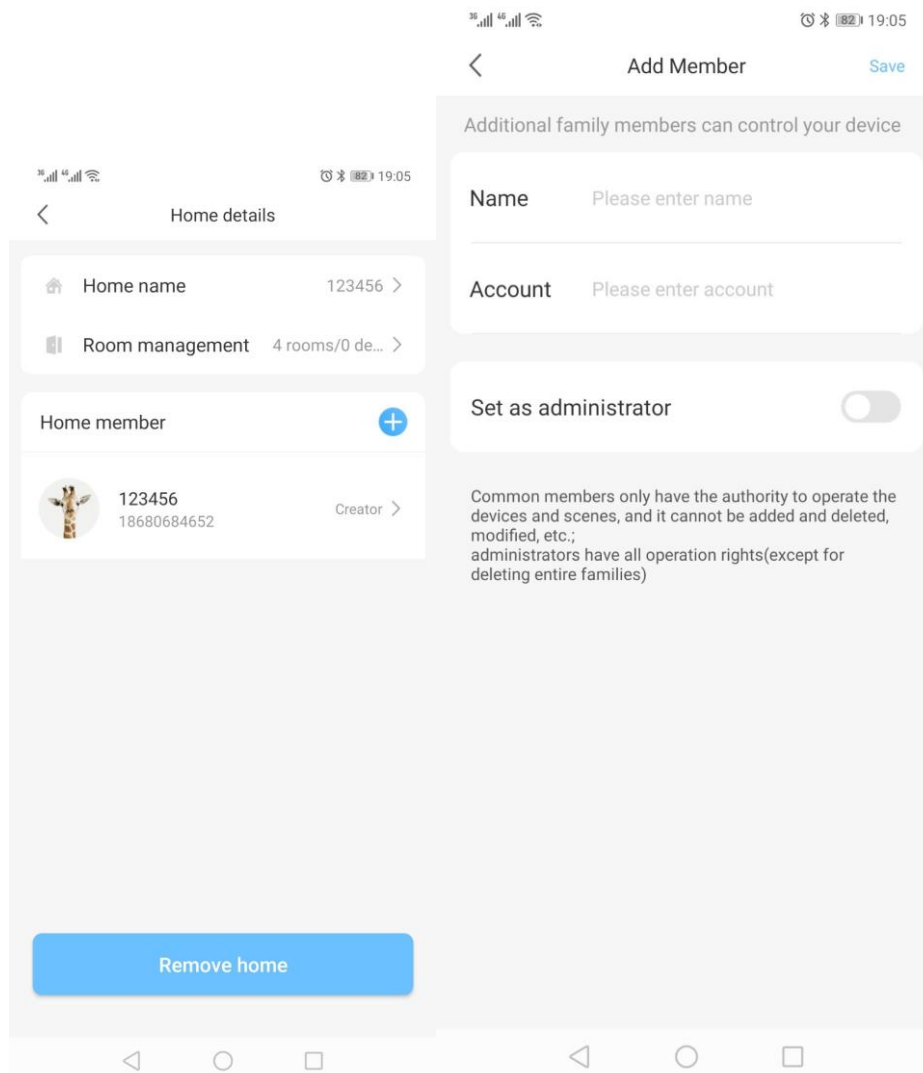
Tap "Room management" to enter the room management screen. Tap a room to edit it . To sort or delete a room, press and hold the room on the room list .

To add a room, tap "Add" in the upper right corner and select the device required by the room.

(Note: One device can be bound with only one room.)

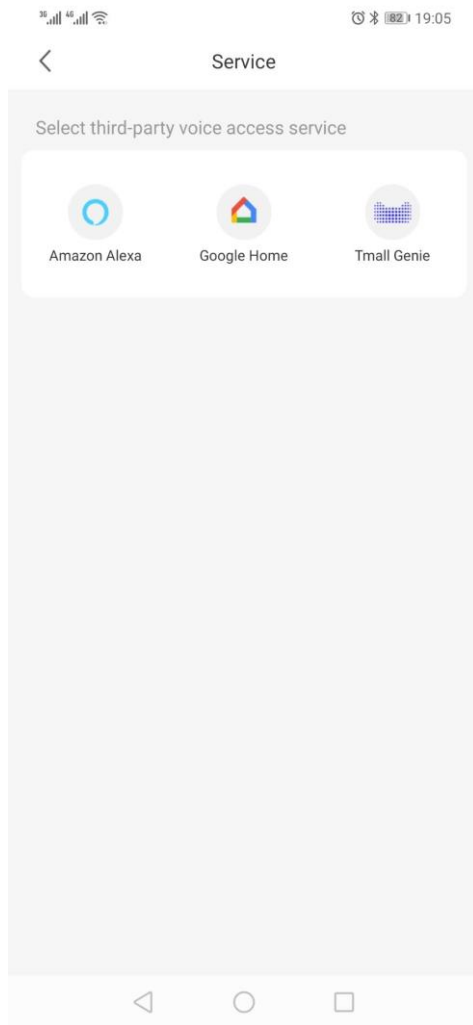
4.7.2.3 Add a member

Tap "+" to display the screen for adding home members. Enter the home member name and account number. After the home member is successfully added, the home member can control the devices within the home.



4.8Service

Select the third-party voice access service. The device supports voice control (Amazon Alexa, Google Home, and Tmall Genie) through mainstream smart speakers. You can view configuration instructions based on your smart speaker model.



4.9 Help center (providing common FAQs)

4.10 About us (viewing the app version)

Remarks:

Figures in this document are captured from app for Android systems and may be slightly different from those of the iOS systems. Due to constant updates of products and software, data and software UIs in this document are only for illustrative purposes and are subject to change without notice.

5.Smart Speaker Manual

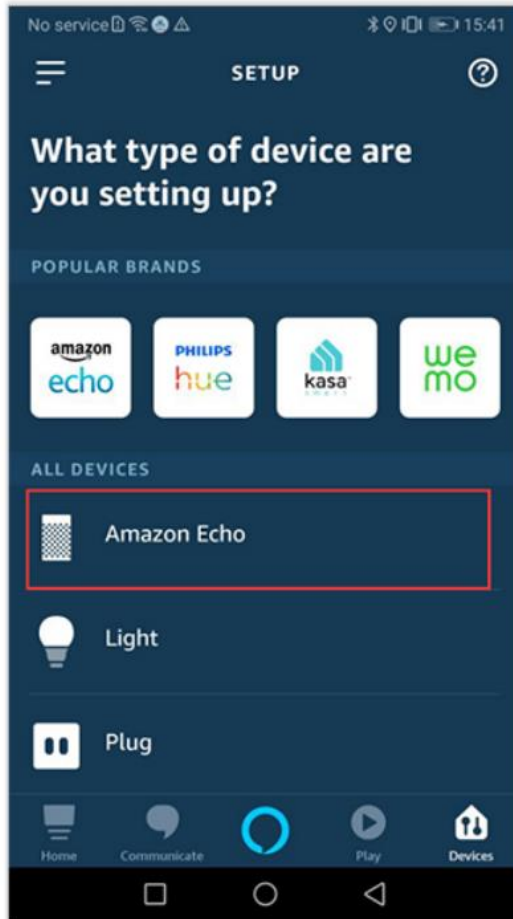
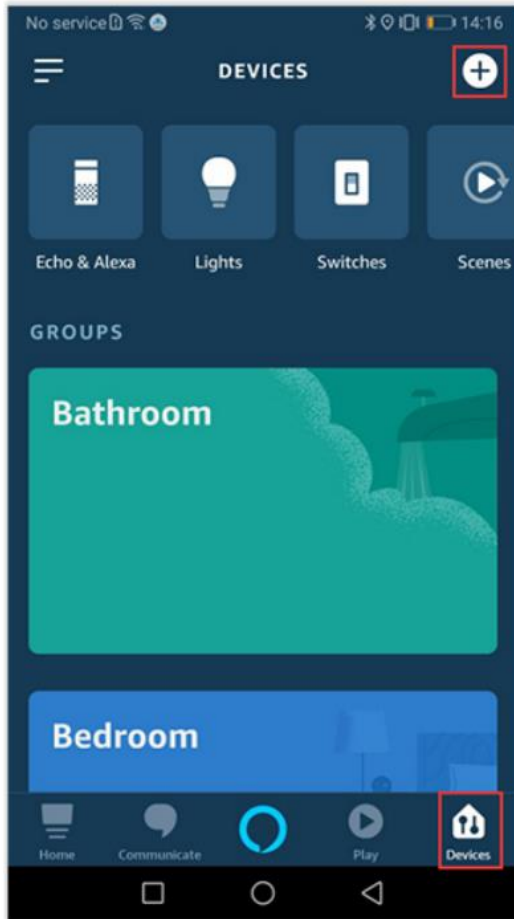
5.1 Amazon Alexa

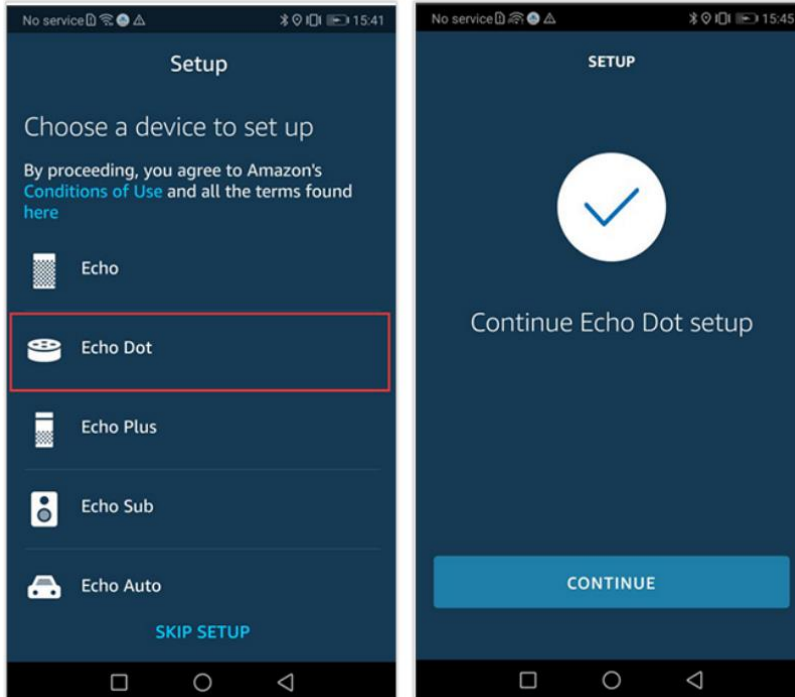
Step one: Download and Install the APP

Download the "Amazon Alexa" APP in the app market, install and register the Amazon account to log in and open "Amazon Alexa".

Step two: Configure the device; (Ignore this step if configured)

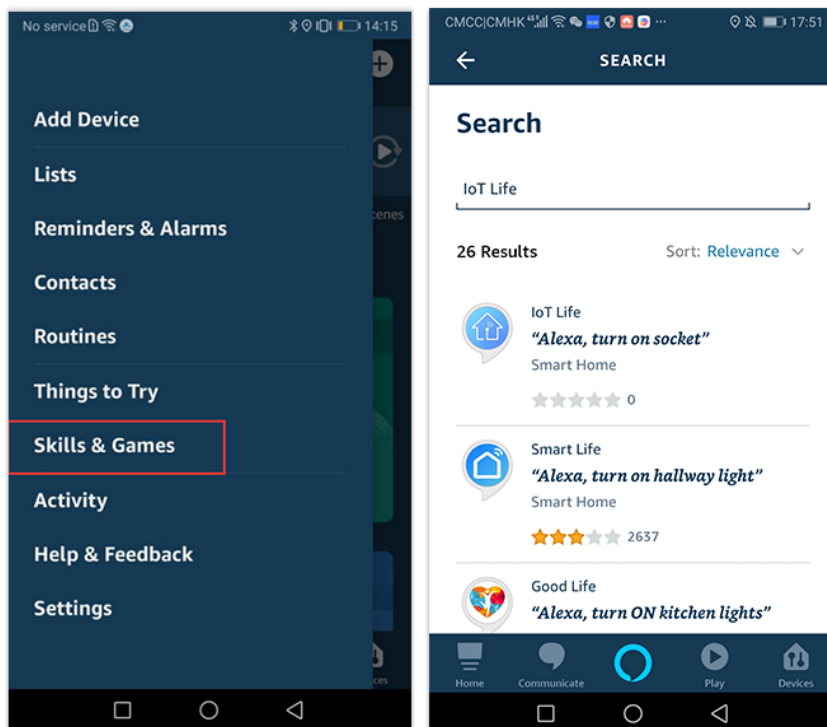
- 5.1.2.1 Select Device, click the "Add" in the upper right corner and select Add Device;
- 5.1.2.2 Click "Amazon Echo" and select the type of speaker you want to add. Press and hold "." button after the device is connected to the power supply until the yellow light is on, select a wifi and connect after successful connection.





Step three: Bind Skill

3.1 Open the "Amazon Alexa" APP homepage, select "Skills&Games" in the left menu, click "Query" in the upper right corner to enter "IoT Life", click "IoT Life" to enter the authorization interface;



3.2 Select "ENABLE TO USE" to initiate the Skill. In the new page, enter your IoT Life App account and password, and click "Authorize" to bind your IoT Life account.

Step four: Common Control

4.1 After the IoT Life App successfully binds the account to Echo, close the current page. Click "DISCOVER DEVICES" on the discovery device page, and the APP will display all discovered devices after 20 seconds. (Note: Every time you change the device name on the IoT Life App, Echo must rediscover the device, otherwise the device cannot be controlled.) Or you can say to the Echo speaker: "Alexa, discover devices". Echo will scan devices (such as outlets) that were previously configured with the IoT Life App. After waiting for about 20 seconds, Echo will feedback the scan result.

4.2 Click "Discover" to search for devices, or use the voice "Alexa, discover, devices"; After the device is discovered, the device can be grouped and controlled by the group to control the switch and brightness of the entire device. Control voice to the device; Control your device with the following instructions:

Alexa, turn on/off bedroom light. (turn the light on or off)

Alexa, set bedroom light brightness to 50 %. (light brightness percentage)

Alexa, set bedroom light to warm white. (light color temperature adjustment)

Alexa, set living room strip light to red (light strip color adjustment)

Note: Smart speakers can control smart sockets, bulbs, light strips, wall switches, wireless switches, curtains and many other smart devices.

5.2 Google Home

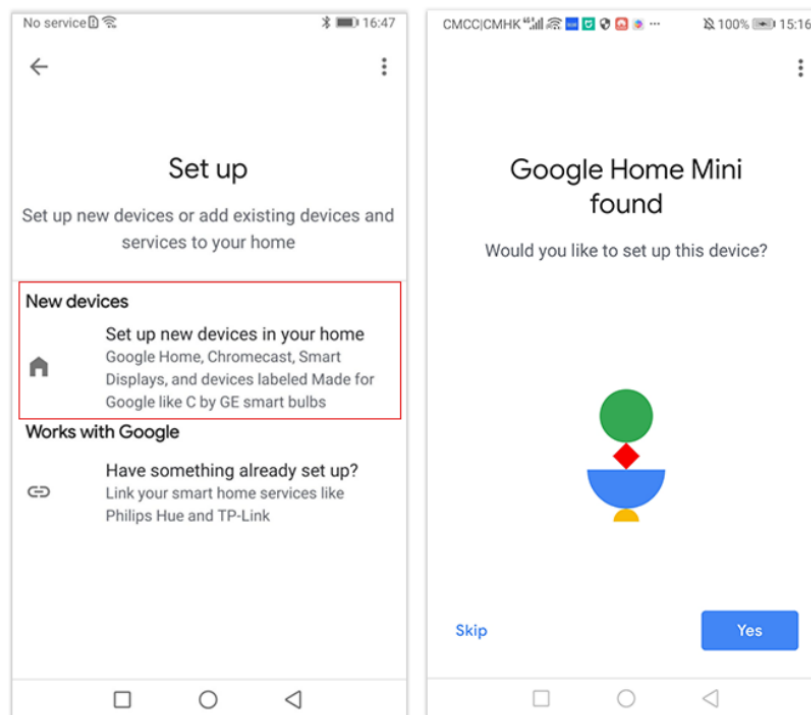
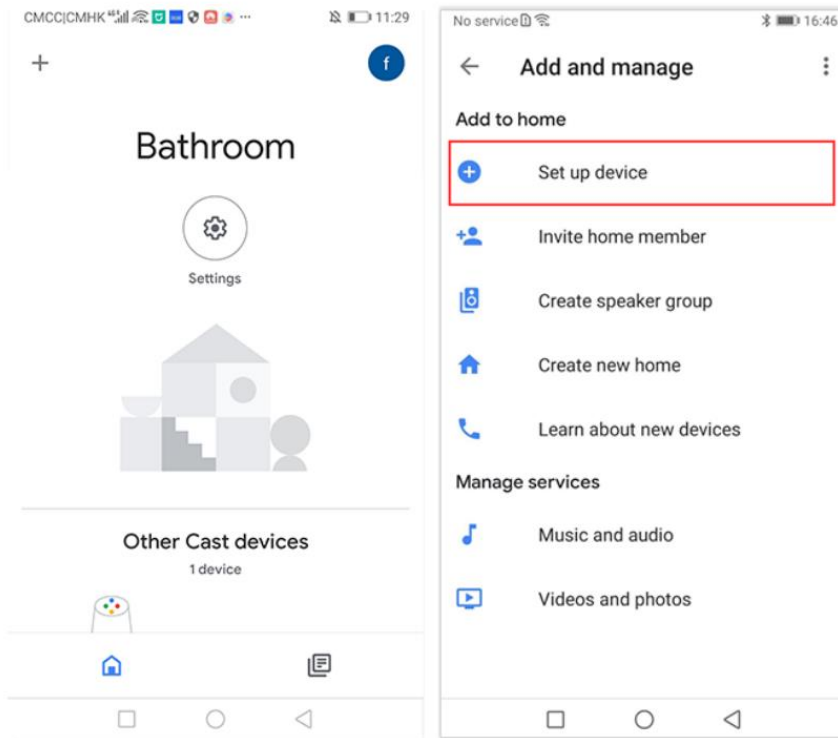
Step one: Download APP

Download the "Google Home" APP in the app market, install and register to open "Google Home" after login;

Step two: Configure device (Ignore this step if configured)

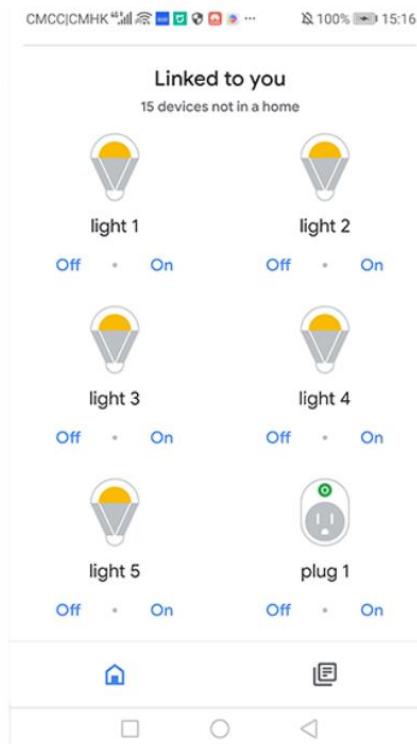
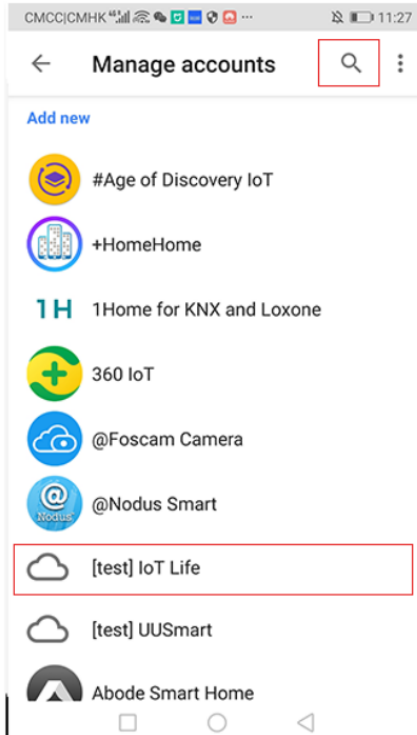
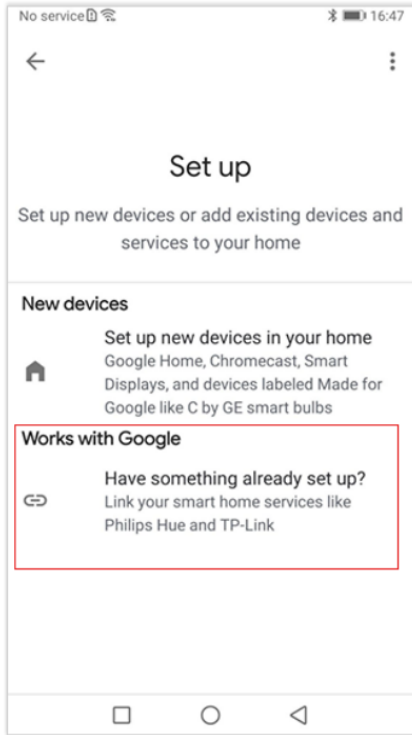
5.2.2.1 Go to home page, click the "+" button to open the left column, select "Set up device" and click "New devices"; Select a room and search for a smart speaker device; After finding the device, click the settings icon to manage the current device.

5.2.2.2 Select the device placement location in the "My Room" option, or click "New" to customize the room;



Step three: Authorization Login

Go to the home page, click the "+" button to open the left side of the home page, click "Set up device", select "Works with Google" and enter the service platform interface, click the icon in the upper right corner (triangle icon), search "IoT Life", find "IoT Life" and click to enter the login interface, enter the registered "IoT Life" account password, and realize the authorization login to see some devices added in "IoT Life".



Step four: Common Control

Go to the home device control interface, click the "+" in the lower right corner to add the device, click the device pattern to set the nickname and room; Or you can wake up your device by saying "OK google" to "Google Home".