



IP67

N2515

LED Neon Light Silicone Tube

Product Specification



Product Features

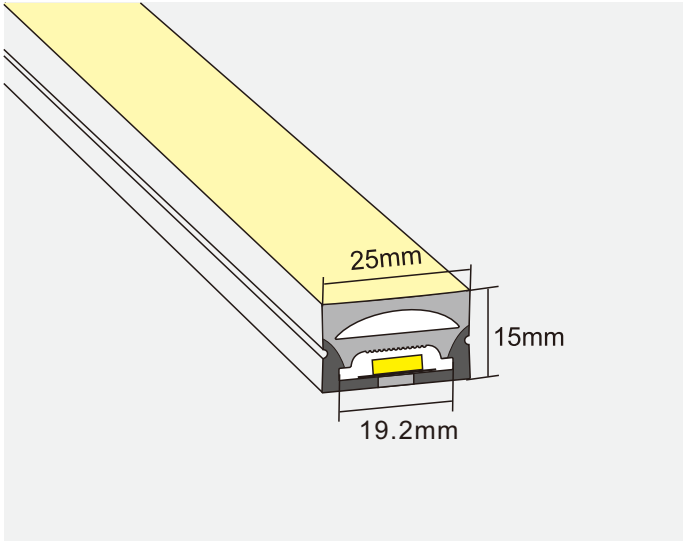
- At-yellowing and heat resisting silicone glue, chemical resistance acid and alkaline, available for extremely terrible outdoor environment.
- Uniform and soft luminance, no light spot.
- Super brightness large chip, golden wire welded and copper led holder for quicker heat dissipation, higher stability, longer life span.
- Leadless SMT technique (RoHS certificated), smooth welding joint, firm connection of LED and pcb.



LED strip colloid specifications comparison

Materials	Silicone flexible led strip	PVC flexible led strip	Notes
Main parameters			
Colloid features in -40℃	No crack after 30 days	Totally cracked	The low temperature resistant of silicone is superior than PVC or epoxy materials
Colloid features in 120℃	No obvious change after 72 hours	Colloid changed into yellow and deformed after 2 hours	The high temperature resistant of silicone is superior than PVC or epoxy
Colloid features in 180℃	No obvious change after 72 hours	Colloid changed into brown and some melted after 20 minutes	Over 150℃, PVC is easily hydrolyzed, Viscosity becomes weaken and easily separated
Steadily lighted in Seawater for 72 hours	No obvious change	Serious atomization on the surface	The waterproof grade of silicone led strip can reach to IP67, high resistance to acidic alkali and salt properties
Thermal conductivity	Good thermal conductivity	No thermal conductivity	Pvc and epoxy cannot conduct heat, while silicone has good thermal conductivity

Structure & Spec.

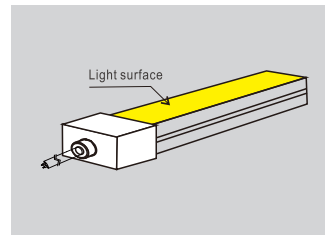
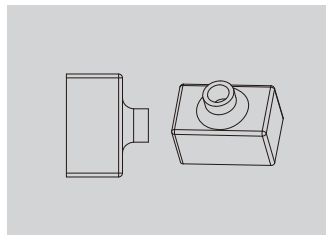


Size (mm)	15*25
PCB Limited (mm)	15-18
IP Grade	IP67
Working Temperature	-20 to 50°C
N.W.(G/M)	295
Voltage (V)	24 DC
Watt (W/M)	30 Max.
LED Type	2835/3528/5050
Color	WW/NW/CW/RGB/RGBW
Luminous (LM)	1050
Luminous Efficiency (LM/W)	55
* This lumen is based on SMD3528-240LEDS/M inside.	
CRI (RA)	>80

Endcaps

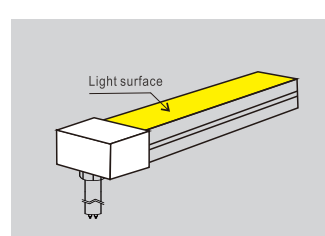
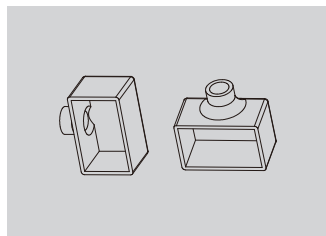
1, Straight cable output:

Connects light to power supply with pre-installed end feed cable, IP67.
Cable length available in 0.2m, 1m, 2m etc.

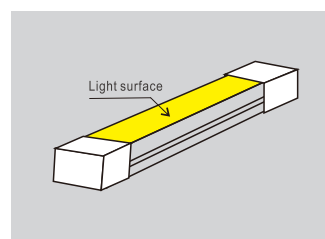
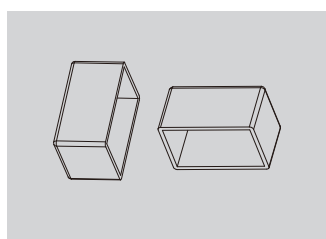


2, Cable output from side:

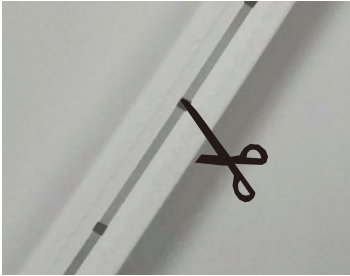
Connects light to power supply with pre-installed end feed cable, IP67.
Cable length available in 0.2m, 1m, 2m etc.



3, End caps without hole:

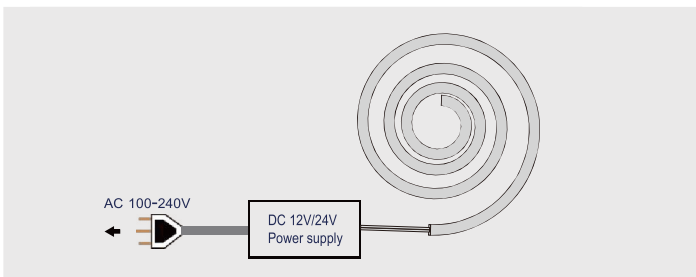


Cutting method

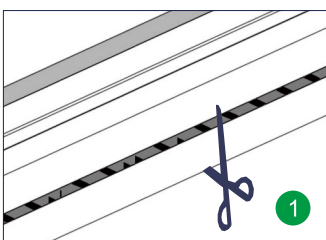


Cut it only at the cutting sign.

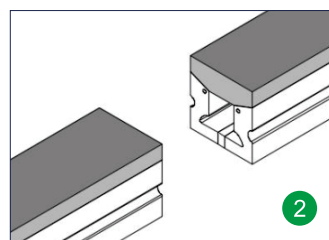
Mounting method



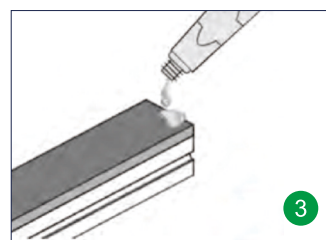
Enclose the cutting end



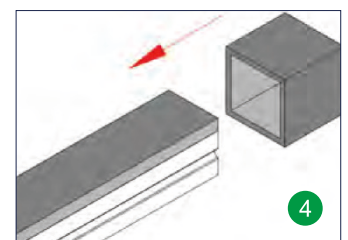
Cut the appropriate place



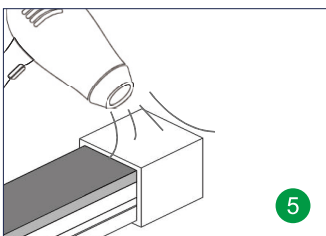
Finished the cutting



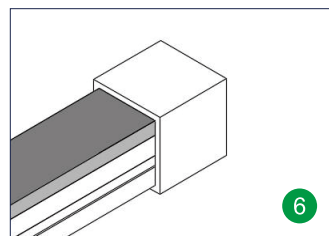
Coat the section with glue uniformly after cutting



Insert the section into the plug according to direction of arrow

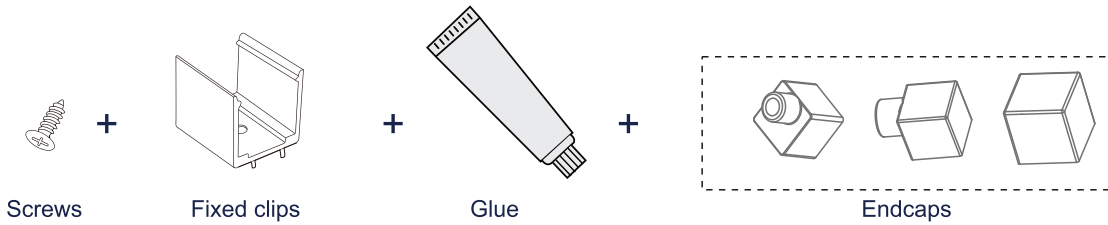


Dry the plug with hot wind or natural wind until make sure the installation is firm

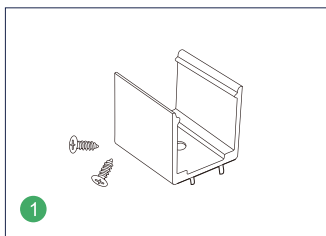
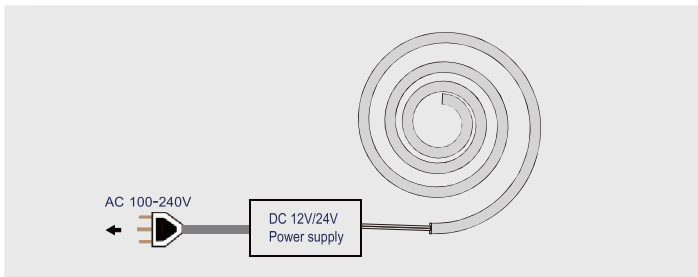


The effect of finished plug installation

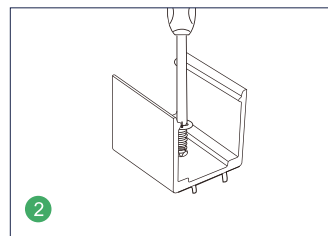
Installation Accessories



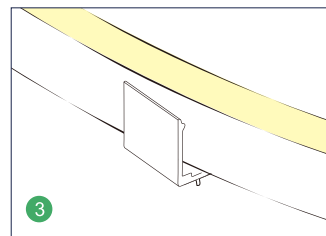
Installation Instructions



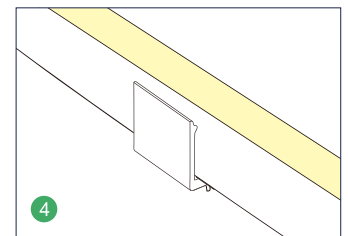
1 Prepare the screws and fixed clips



2 Adjust the fixed clips to the appropriate place, use a screwdriver to fix the screw.



3 Put the light emitting surface upwards, then insert the LED strip into the fixed clips.



4 Fix LED strip completely into the fixed clip, LED strip surface must be parallel to the top edge of fixed clip.

Packaging



50m/Roll



Each roll pack with expandable polyethylene and compression film to fix.



1 Roll/box

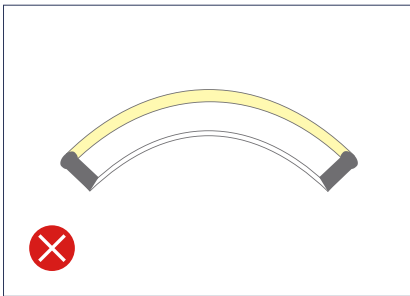


Inner size
355x355x305mm

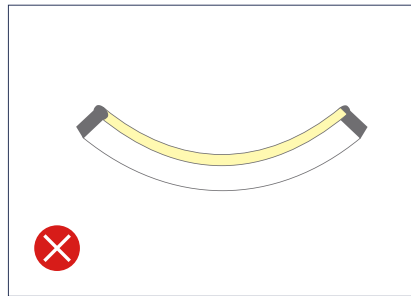
Cautions

- Please notice that the strips are not bendable to all directions. As the appropriate specific shape and degree, please follow the following instruction.
- LED strips are low voltage products, you must use the power supply (transformer). Please don't connect the led strip directly to the AC 110V or AC 220V. Otherwise, it will burn out the LED strips and lead to safety (security) accidents.
- Please read the specifications thoroughly before installation by professional staff to make sure the safe use.

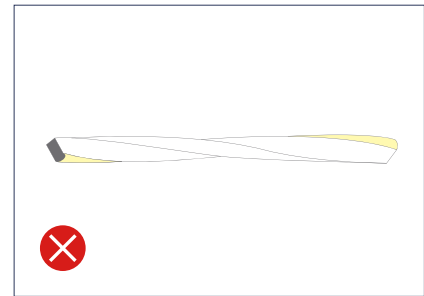
Wrong bending way



Face to the side surface (as the picture shows). Do not bend downward to damage the strip.

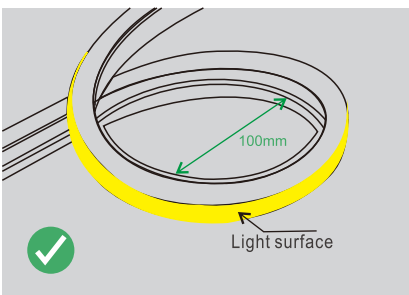


Face to the side surface(as the picture shows). Do not bend upward to damage the strip.

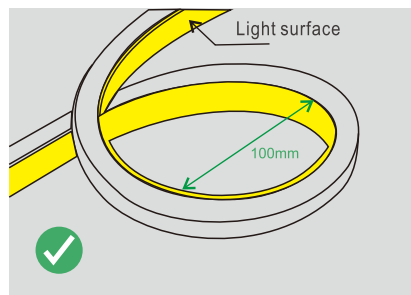


As the picture shows, please do not twist the strip, or it will be damaged.

Correct bending way



Light surface upwards, the strip is bendable to right or left naturally, the minimum bending diameter is 100mm.



Light surface upwards, the strip is bendable to right or left naturally, the minimum bending diameter is 100mm.