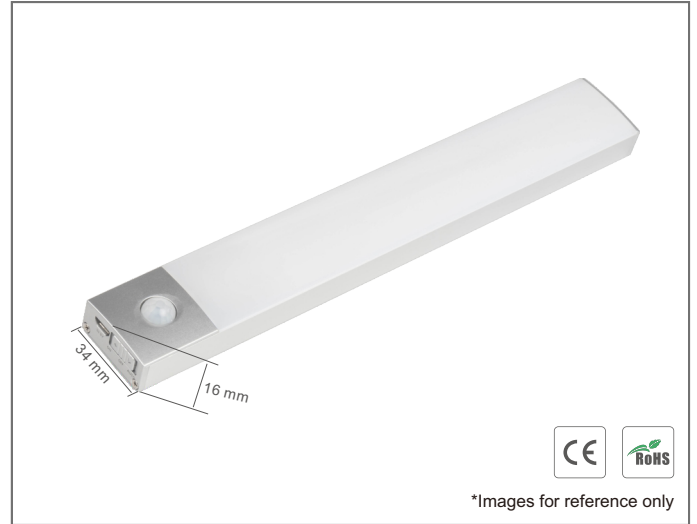


LED Closet Light CA01-PIR

Features:

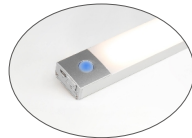
- PIR motion sensor built in. Light will be *ON* when people move into the detection range. Light will be *OFF* after 20s when people leave this detection range.
- Easy to install.
- Apply for bedroom, cabinet, wardrobe, etc.
- High quality LEDs, super bright.
- Detection distance: $\leq 2m$.
- Life span: $>50,000h$.



Specification:

Input voltage: 5V/1A.

Output Voltage: 5V.



Three lengths can be chosen.

①



②



③



Three kinds of function switch



- AUTO: PIR motion sensor mode.
- OFF: turn off the light
- ON: the light is always on.

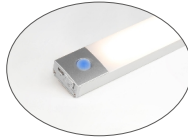
Lithium battery power supply



When charging this product, red light is flashing.



When the product is fully charged, red light is always on.

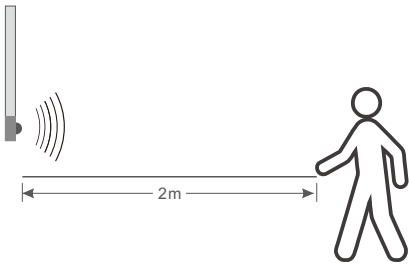


When the product is working, blue light is always on.

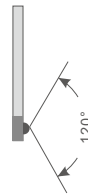


When the battery power is not enough, blue light will flash.

PIR motion sensor detective distance (≤2m)

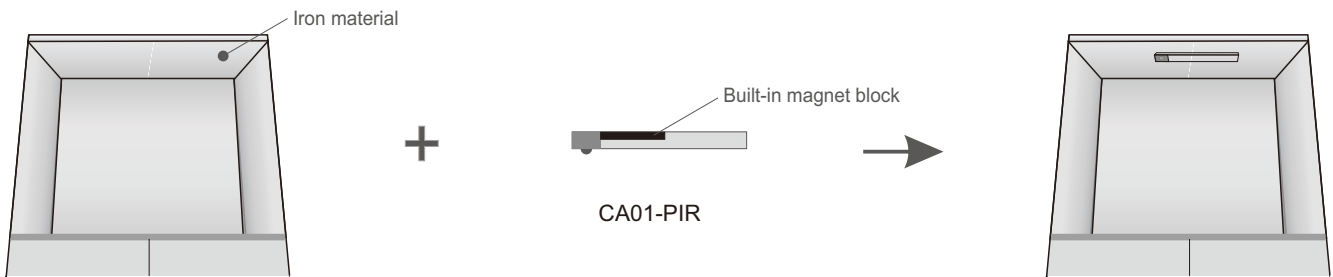


Detection angle:



Installation:

① Be installed on iron materials, with built-in magnet.



② Be installed on non-iron materials, with double sided adhesive tape.

