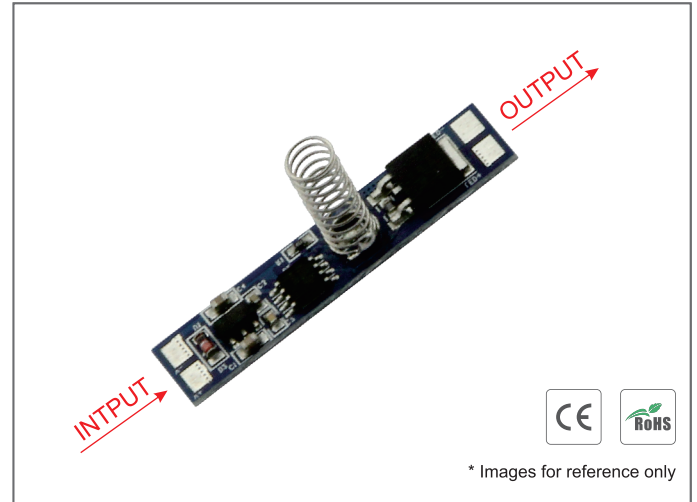


Touch Dimmer TD002

Functions:

- Touch switch ON/OFF with dimming function.
- Input Voltage: 12V-24V DC.
- Output Voltage: 12V-24V DC.
- Input Current: 8A.
- Height of spring: 20mm.
- Load around 96W for 12V, or 192W for 24V.
- Dimension: 43*10mm.

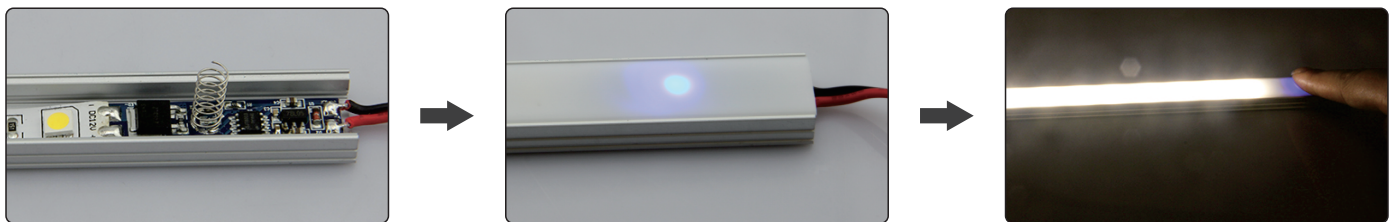
V+	---	DC input positive
V-	---	DC input negative
LED+	---	Output to LED Strip positive
LED-	---	Output to LED Strip negative



Operations:

- **The conductive spring needs to be covered by insulation material ,such as glass、 plastic or ceramic material (thickness \leq 3mm).**
- **Non-memory touch switch performs as below:**
 - 1) Originally "Off" when the power is connected.
 - 2) Quick touch(time is less than 550ms) can turn ON/OFF the light. One touch to turn on; touch again to turn off .The lamp is 90% bright when it is on.
 - 3) Hold on touching (time is above 550ms) can adjust the brightness endlessly. It will reduce the brightness endlessly to the minimum in 3 seconds holding on when the light is on. It will increase the brightness endlessly to 100% in 3 seconds holding on when the light is off.
 - 4) Quick touch and hold on touching can be chosen anytime without any collision.

Installation Steps:



Note: The function/program can be customized, made upon different needs, such as longer time for stay on, etc.