

LED Pendant Linear Light A3565

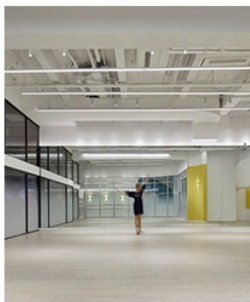
Functions:

- Professional optical design.
- The same product with multiple light distribution is available for different applications.
- AL6063-T5 aluminum profile with high-quality surface treatment and three optional colors of black, white and silver.
- Ultra anti-glare design UGR≤19
- LM80 certified Light source, life≥50000h.
- Built-in efficient and safe flicker-free philips power supply
- 10°/24°/36°/48°/10*35° multiple optical design, more application.



Applications:

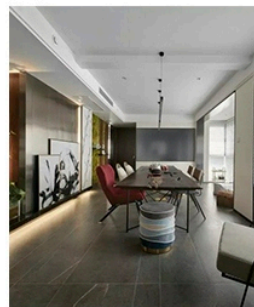
Diffuser



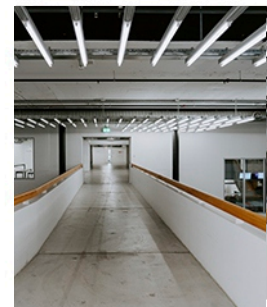
Anti-glare



Grating



Blind



Our three lengths standard models Specifications:

Model	Power	Color	Lumens	Ra	Size	Voltage
A3565-1200	38W	WW/NW/CW	1800/1900/2000lm	> 80	L1200*W35*H65	200-240VAC 50/60HZ
A3565-1800	53W	WW/NW/CW	2500/2650/2800lm	> 80	L1800*W35*H65	
A3565-2400	71W	WW/NW/CW	3350/3550/3750lm	> 80	L2400*W35*H65	

REV:A0

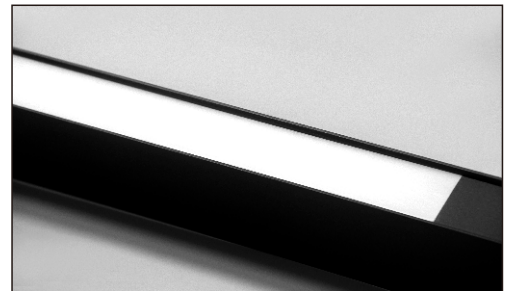
Lister:

Assessor:

Approver:

< 1/2 >
REV:A0

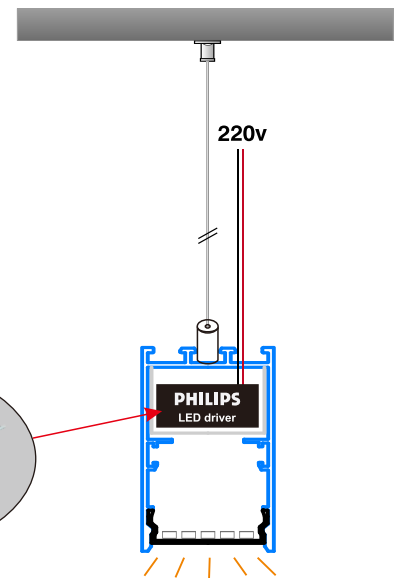
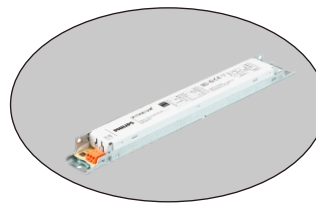
Details:



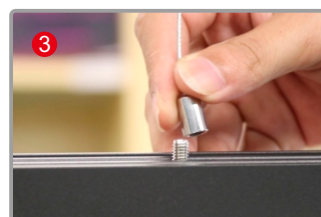
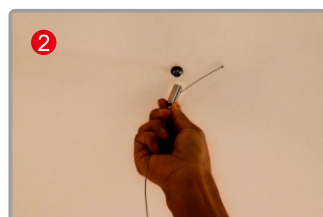
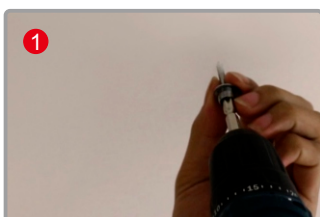
Service Environment And Installation:

1) A3565 is suspended from ceiling with stainless steel cable and fixing componentry.

Steel Rope



2) Installation Steps:



REV:A0