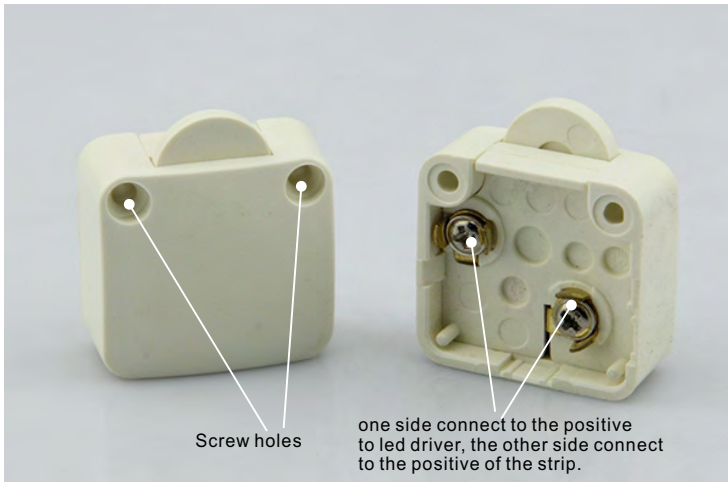


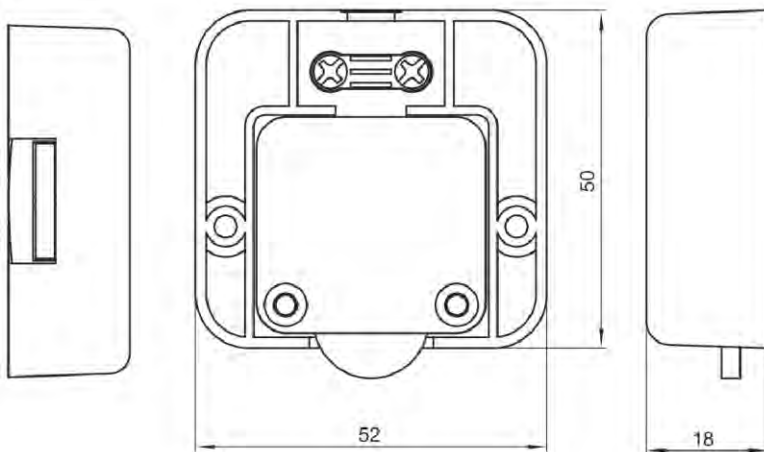
SW-Pulley

Description:

- 1, Mechanical closet switches.
- 2, Pushing Distance: 10mm.
- 3, Output Voltage: <250V 2A.
- 4, Contact R: 20mΩ max.
- 5, Insulation R: 100MΩ min.
- 6, Dielectric Strength: 1Minute 2500V AC.
- 7, Operating Temperature: -40°C~+85°C.
- 8, Electrical Life: 10000 Cycles.
- 9, Dimension: 38*34*15mm
- 10, Suitable for Wardrobe.
- 11, Value: Non-Waterproof.



Outline Drawing:



Circuitry:

