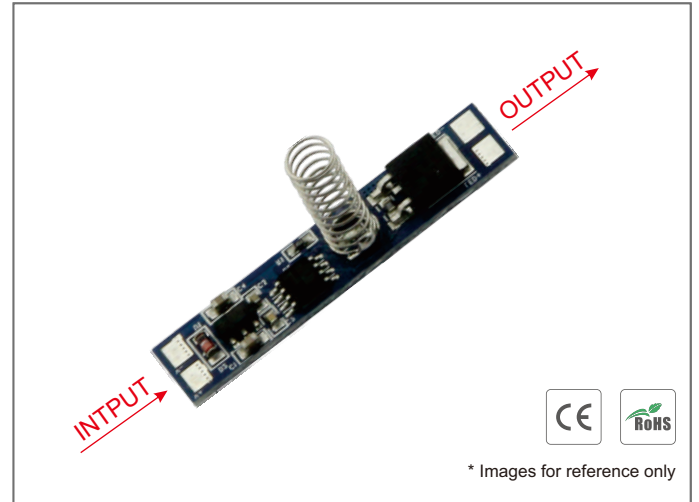


## Touch Dimmer TD002

### Functions:

- Touch switch ON/OFF with dimming function.
- Input Voltage: 12V–24V DC.
- Output Voltage: 12V–24V DC.
- Input Current: 8A.
- Height of spring: 20 mm.
- Load around 96W for 12V, and 192W for 24V.
- Dimension: 43\*10 mm.

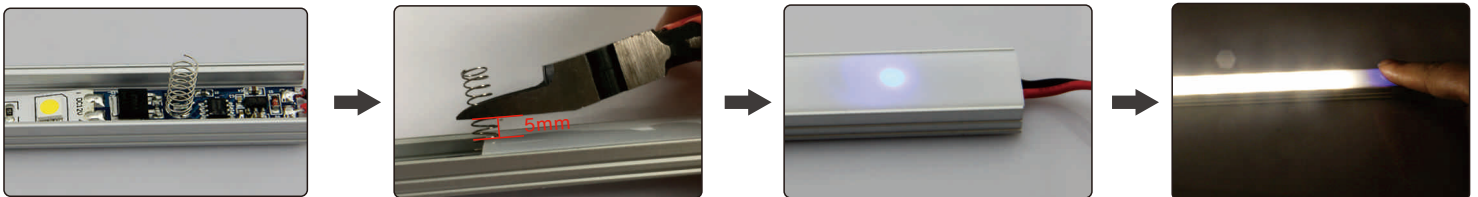
V+	---	DC input positive
V-	---	DC input negative
LED+	---	Output to LED Strip positive
LED-	---	Output to LED Strip negative



### Operations:

- **The conductive spring needs to be covered by insulation material ,such as glass、plastic or ceramic material (thickness $\leq$ 3mm).**
- **Non-memory touch switch performs as below:**
  - 1) Originally “Off” when the power is connected.
  - 2) Quick touch(time is less than 550ms) can turn ON/OFF the light. One touch to turn on; touch again to turn off .The lamp is 90% bright when it is on.
  - 3) Hold on touching (time is above 550ms) can adjust the brightness endlessly. It will reduce the brightness endlessly to the minimum in 3 seconds holding on when the light is on. It will increase the brightness endlessly to 100% in 3 seconds holding on when the light is off.
  - 4) Quick touch and hold on touching can be chosen anytime without any collision.

### Installation Steps:



#### \* Note:

- (1)Height Requirement of Spring : Cut the Spring 5mm above the PC Cover.It is easy to cause a short circuit if the spring is too long with the PC cover is installed.
- (2)The function/program can be customized, made different needs, such as longer time for stay on, etc.