



STARLINE LINEAR

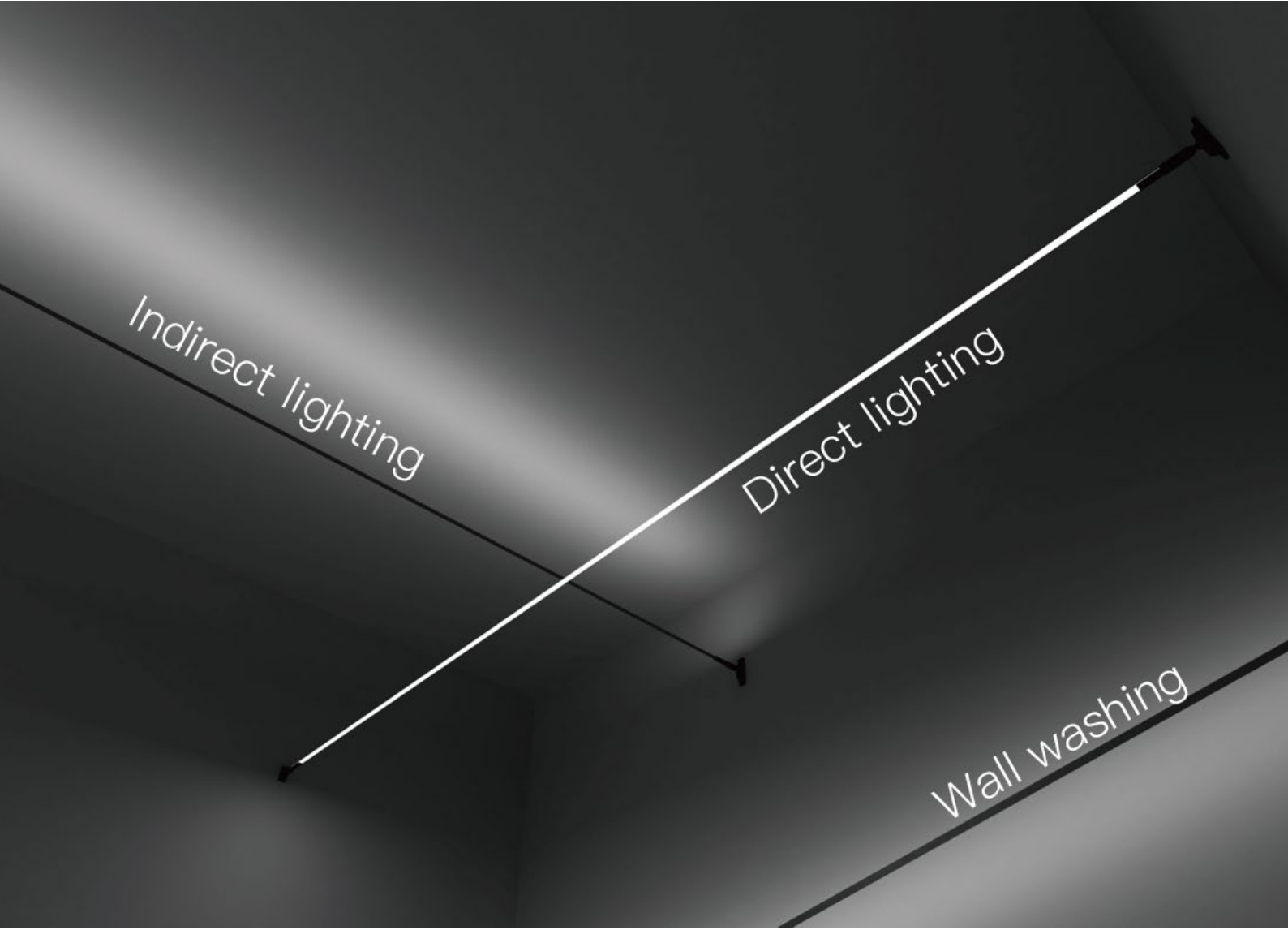


*Images for reference only

Features:

- Flexible and convenient installation, Minor modifications to the walls.
- High quality material, Zinc alloy+stainless steel composition, Strong and durable not easy to deformation.
- Fixed rod can be adjusted by 45°, More possibilities, Suitable for direct, Indirect lighting, Wall washing lighting and other applications.
- Steel strip can up to 25m, Which can perfectly adapt to the lighting decoration of large space.





Accessories:



Skyline Linear Wall Base Holder

+



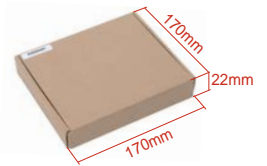
STEEL BAND 25 Meters/roll

=



SKL01-W+SKL02-W
Weight: 0.34kg

+



SKYL03-W
Weight: 0.8kg



Skyline Linear Wall Base Holder

+



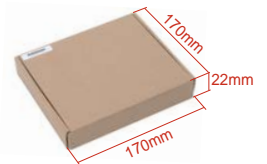
STEEL BAND 25 Meters/roll

=

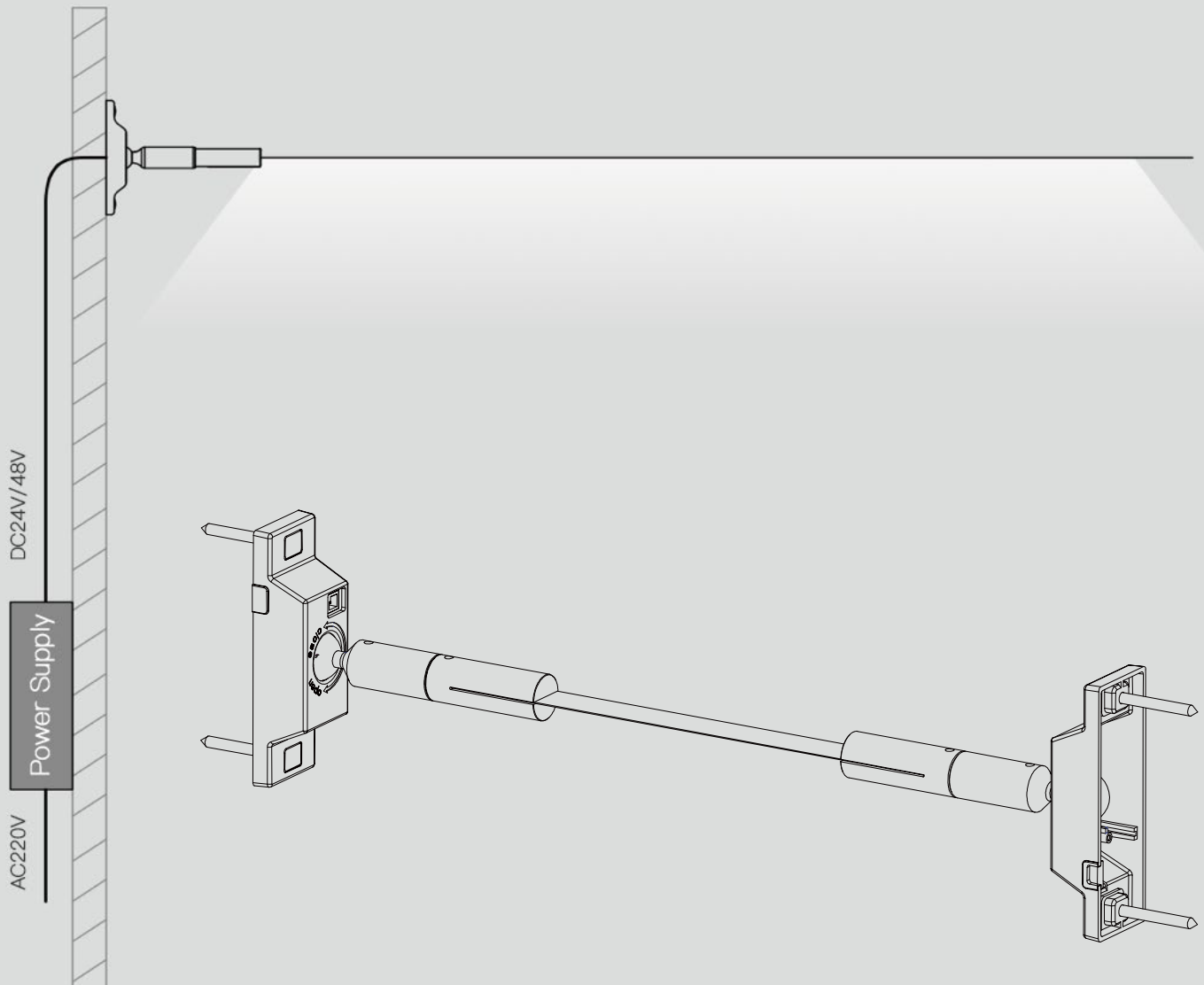


SKL01-W+SKL02-B
Weight: 0.34kg

+

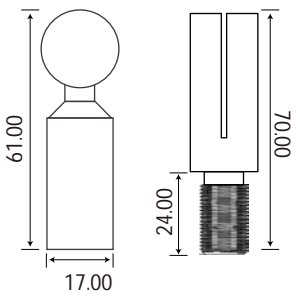


SKYL03-B
Weight: 0.8kg

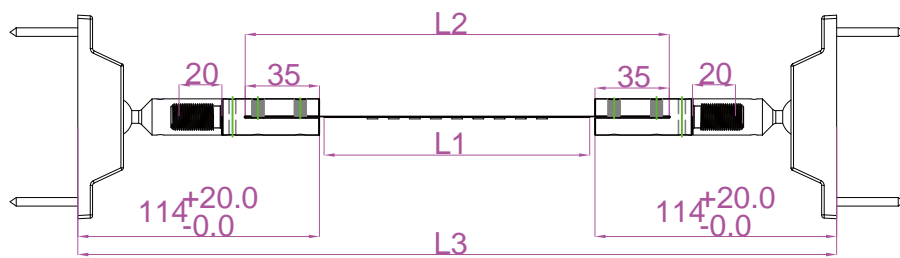
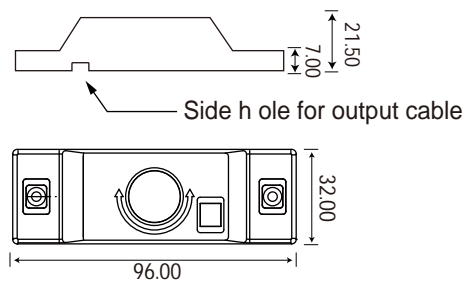


Size:

Screw Shaft / Cardan Shaft



Cardan Shaft Base



- L1: Length of led strip
- L2: Length of steel band
- L3: Length between two walls

L1=L3-(228mm~268mm)
 L2=L3-(158mm~198mm)

Recommended Light Strip:

Part Number	LED Qty/m	Voltage	Power/M	CRI	Size
SUR-2835FW120CC-24V	120	24V	14.4W	≥80	MAX:12m
SUR-2835FW120CC-48V	120	48V	14.4W	≥80	MAX:25m
SUR-FCOB320-24V	320	24V	4.5W	≥80	MAX:5m

*In order to avoid the Voltage drop, we could connect the power supply on both ends of the 12v/24v led strips, or choose the high voltage led strips.

Connection Diagram:



Step 1

Products include screw shaft /cardan shaft, Cardan shaft base, Fixing Screws.



Step 2

Drill holes in advance at the outlet of the wall.



Step 3

Take out the base and put the shaft throughout the hole in the base.



Step 4

Connect the power supply PCB on the base with the outlet connector of power supply on the wall.



Step 5

If it is inconvenient for the power supply to go out from the wall, you can connect to power supply through the outlet port reserved on the side.



Step 6

Open the base plug, Take out the screw and fix it on the drilled wall. Repeat the operation on the other end.



Step 7

Use the tool to measure the distance between two walls.



Step 8

Cut the steel band based on the necessary length, and then stick and fix the light strip on it.



Step 9

Connect the screw to the steel belt with screws.



Step 10

First screw into the connection without power supply.



Step 11

When connected with one end of the power supply, Hold the screw and twist one end of the universal shaft to tighten the steel belt.



Step 12

① Use a screwdriver or hand to fasten this block of accessories
② Use a screwdriver or hand to rotate the block to tighten the steel band



Step 13

Plug the led strip connector into the female base connector, Take out the screw and fix it on the drilled wall. Repeat the operation on the other end.