

Free Cutting Linear light Free Move Door Sensor Switch Series

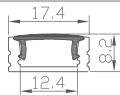

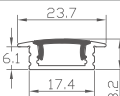

This produce is designed to meet IP20 waterproof level.

Profile construction makes it durable and sturdy, resistant to standard loads.

Suitable for wardrobe, kitchen cabinet, furniture, cabinet lighting, etc.



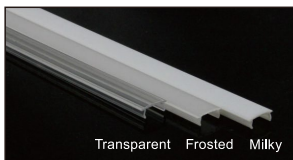
Recommened Profiles/Optional

Model	Color	Size(mm)	Length	Drawing	Photo	Installation
A1707	Sliver/White/Black	17.4*8.2	1-3m			Surface mounting
A2507	Sliver/White/Black	23.7*8.2	1-3m			Embedded installation

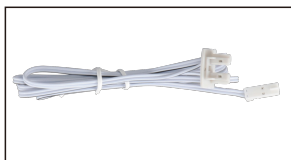
Accessories for A1707



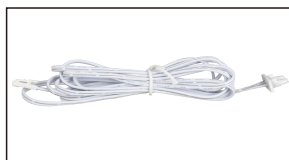
LED Aluminum profile 1-3meter



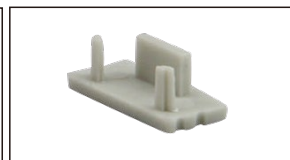
PC Cover



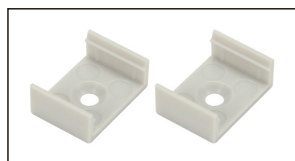
Left connection cable



Right connection cable



Endcaps

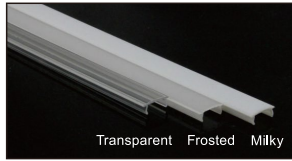


Mounting clip*2

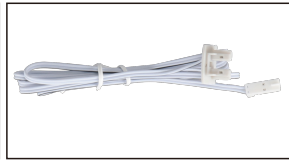
Accessories for A2507



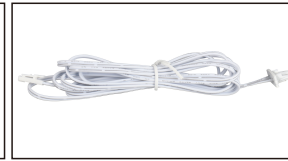
LED Aluminum profile 1~3meter



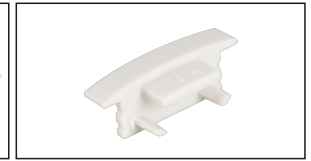
PC Cover



Left connection cable



Right connection cable

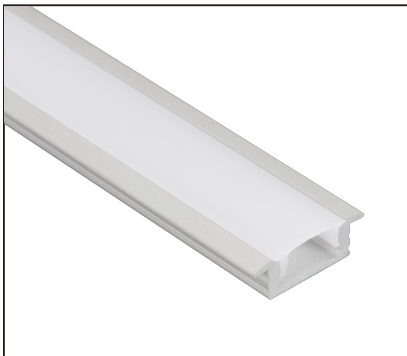


Endcaps*1



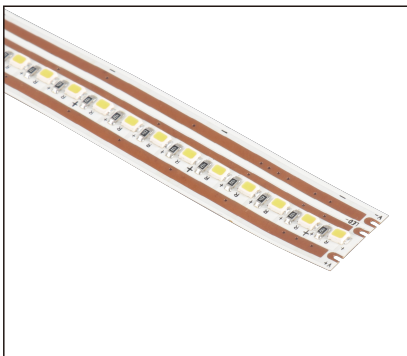
LED Aluminum Profile A1707

- > Match Flexible LED Strips: UP to 12mm wide.
- > Material: Anodized Aluminum Extrusion.
- > Color: Frosted Cover/White/Black.
- > Length: The length can be customized.
- > Accessorise: End Caps, Metal Cilp, Cilp and screw.



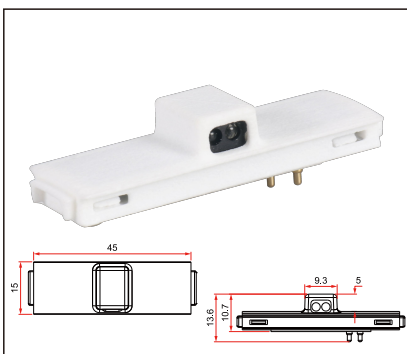
LED Aluminum Profile A2507

- > Match Flexible LED Strips: UP to 12mm wide.
- > Material: Anodized Aluminum Extrusion.
- > Color: Frosted Cover/White/Black.
- > Length: The length can be customized.
- > Accessorise: End Caps.



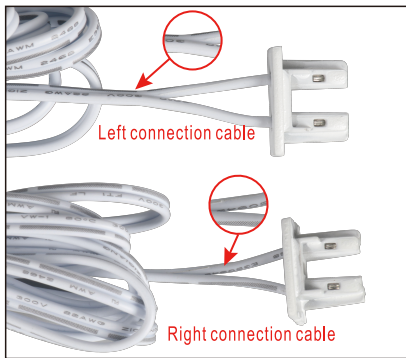
2214 Single color 210 lamps/meter

- > Input voltage: 12V/24VDC.
- > Power: 9.6W/M.
- > CCT: 3000K/4000K/6500K
- > CRI >80
- > Lumens: 1000-1100LM /M
- > Waterproof: IP20



Model: IR016

- > Operation: Lights will be ON/OFF when open/close the door.
- > Customizable, can be hand scan function, buffer function
- > Input Voltage: 12V-24V DC.
- > Output Voltage: 12V-24V DC.
- > Input Current: 2A.
- > Detection Range: 0.5cm≤Detection Range≤10cm.
- > Load Around: Load around 24W for 12V, 48W for 24V.
- > Color: White/Black.



Connection cable

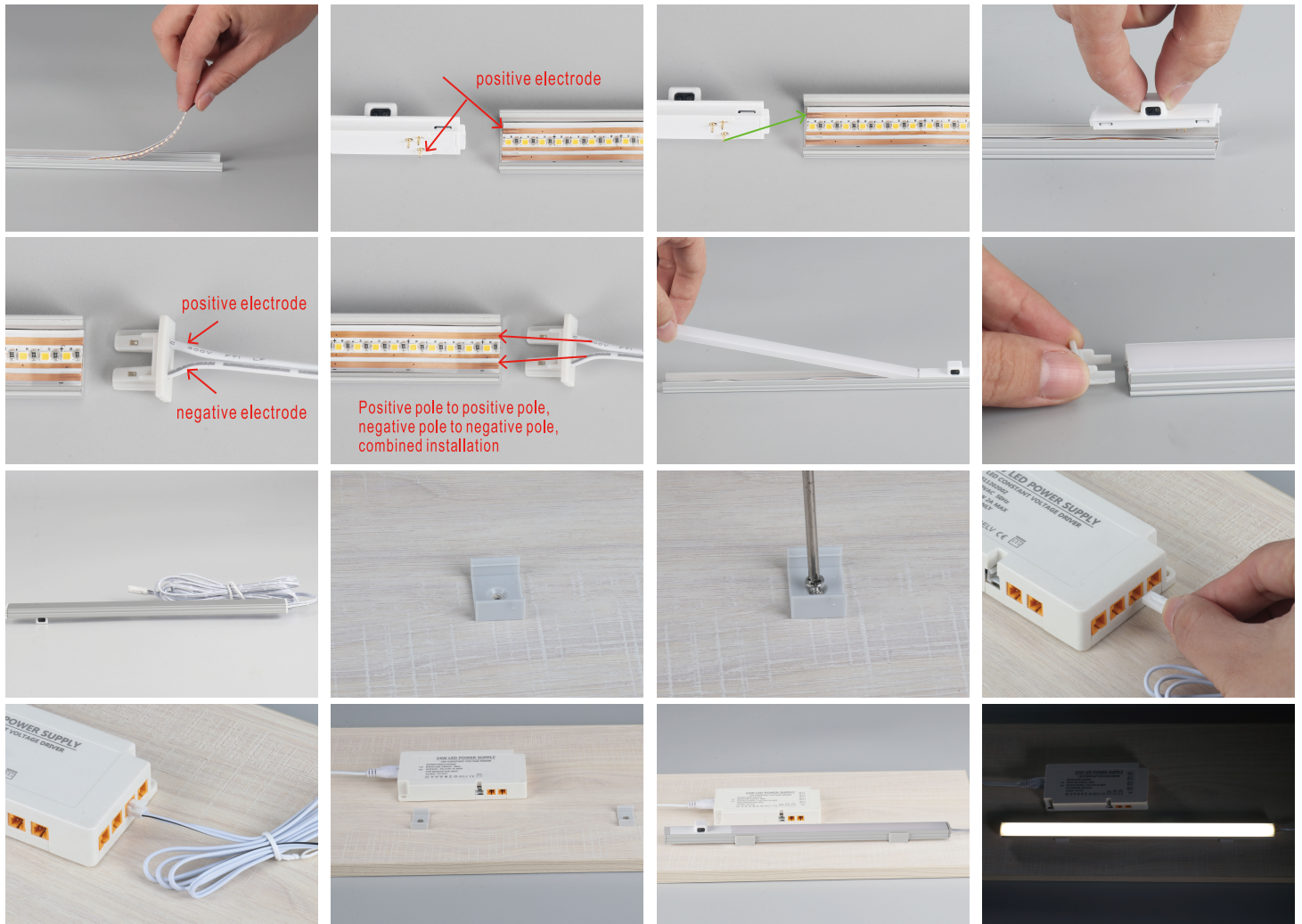
- > Standard wire size: 22AWG.
- > Length: 1 meter, 2 meters.
- > Color: black, white.
- > Connector: L813 male plug in one end, solderless plug in the other end.
- > The wire with letter is positive(+)
- > The wire with stripe is negative(-)

Operations

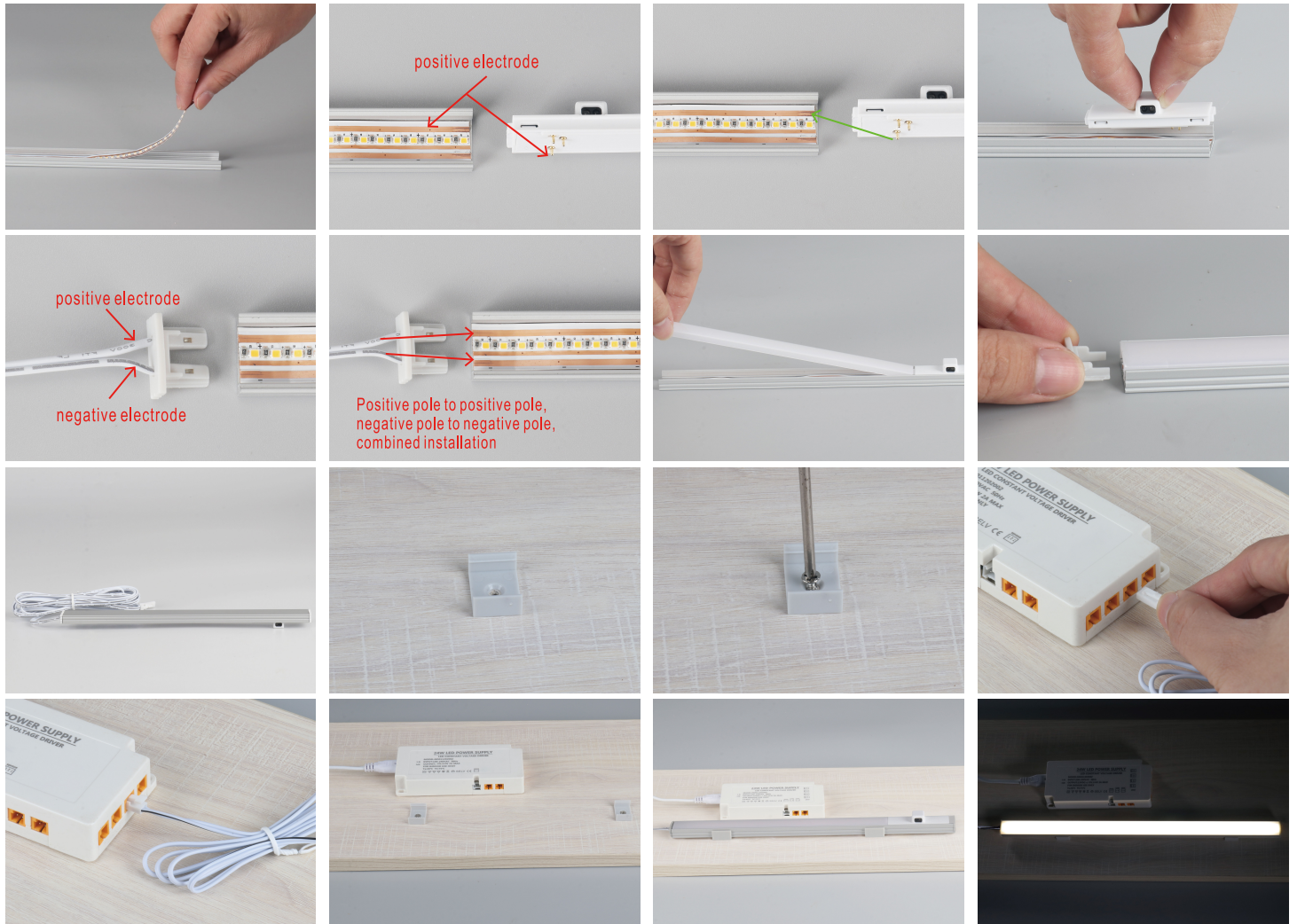
- Lights will be ON/OFF when open/close the door.
- The IR sensor switch will turn on the LED light when the door is open and will turn off the LED light when the door is closed.
- Detection range is 10cm from the sensor detector to the door.
- The sensor switch will turn on or off the LED light with above repeatable steps.

installation procedure

1.Left outlet installation method

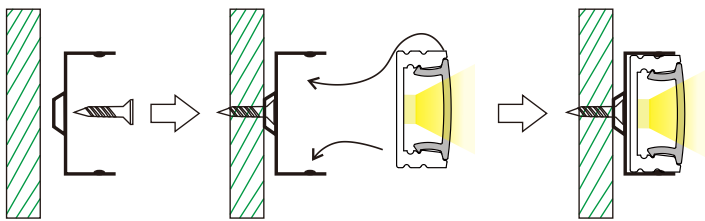


2.Right outlet installation method

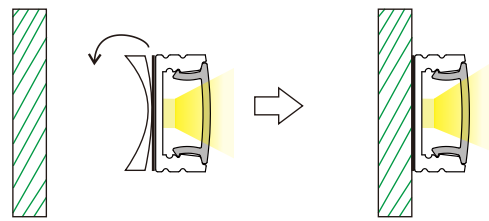


Installation of 1707

1.With clip



2.With double-sided tap



Installation of A2507

Cut a groove in the wall,with width 18mm.and depth 7mm

