



Free Cut Linear Lighting Series: FC-C1707

Seamless connection | detachable connection

Product specification

Lister: _____

Assessor: _____

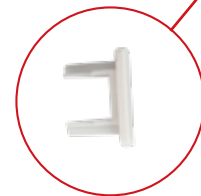
Approver: _____

Specification

Model	Voltage	Watt	Lumen	CRI	Color Temperature	Model of LED Beads	Length (including endcaps)	Package
C1707-1000	12VDC	9.6W/M	800	>80	3000K/ 4000K/ 6500K	2835	1004mm	A light bar, one end caps. Two mounting clips. A power connector (wire length 2m). Frosted PC Cover.
			835					
			820					
C1707-1000	24VDC	9.6W/M	800					
			835					
			820					

Accessories

length can be customized



2m connecting wire

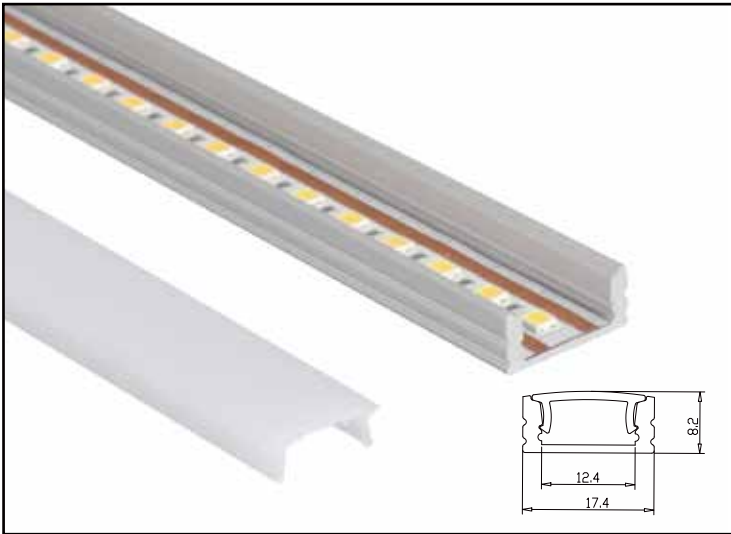


Product Features

- The LED Light is easy to install to wardrobe or shelf with mounting clip accessories. New design with separation of light bar and power wire, easy to install, remove and replace. With modern design, it is suitable for cabinet / furniture / room / ceiling hanging lighting etc. Substantial aluminum mass provide good heat sink for high power leds. It's perfect for seamless connection, no dark space.



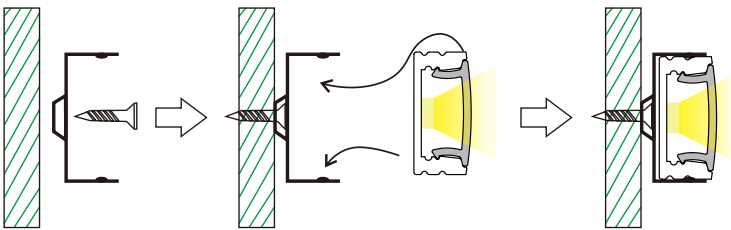
Structure & Spec.



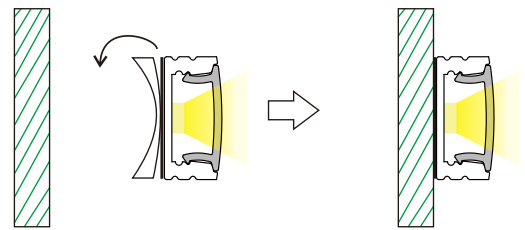
Model	FC-C1707
Size (mm)	17.4*8.2
Material	6063 T5 Aluminum Alloy
Finish	Aluminum Anodized
Color	Sliver/White/Black
Lighting direction	Front luminous
Installation	Surface mount
Color Temperature	3000K/ 4000K/ 6500K
Voltage	12V/24V
Power(W/PC)	9.6W/M
Power output contact	SlingShot Contact
CRI (RA)	>80

How to install

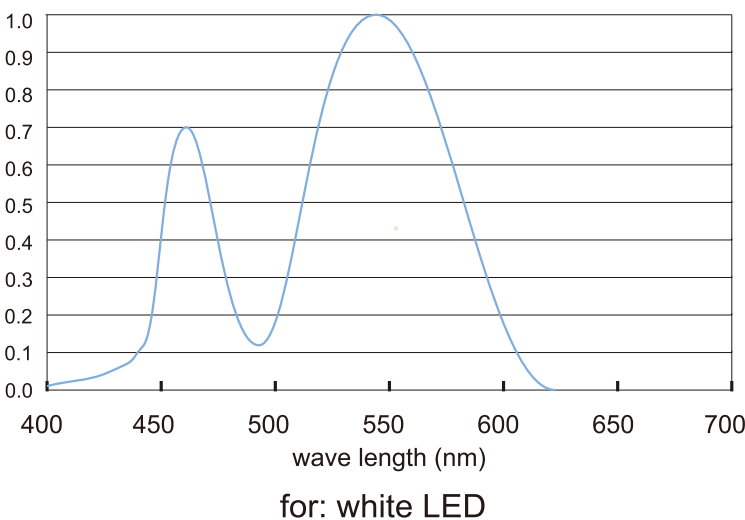
1. With clip



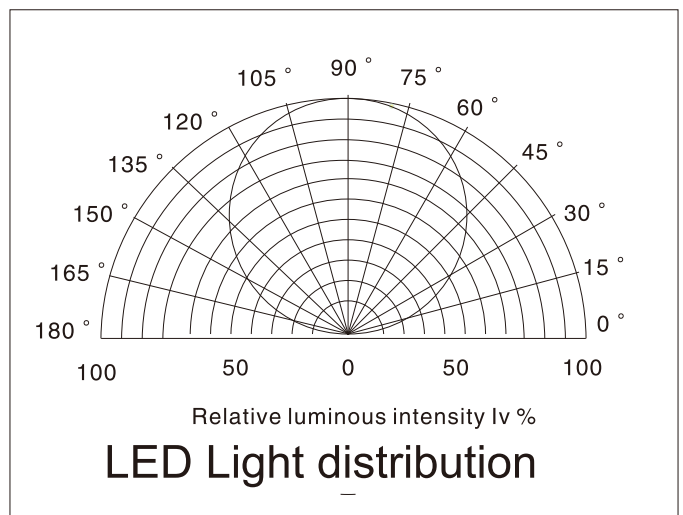
2. With double-sided tap



relative intensity



Radiation diagram



Recommended model of LED cabinet light power supply

SUR-12024-CP

DC Voltage: 12VDC

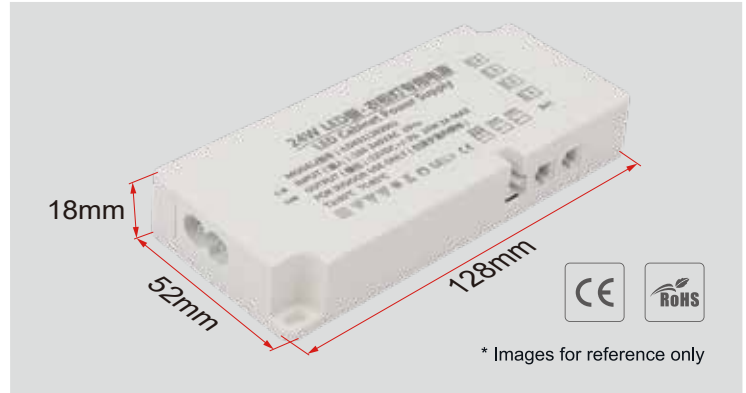
Rated Current: 2A

Rated Power: 24W max

Voltage Range: 100-240VAC

Frequency Rang: 50-60HZ

This Power supply is with 4 outlets for 12vdc led light, and 1 outlet for sensor switch.



SUR-12036-CP

DC Voltage: 12VDC

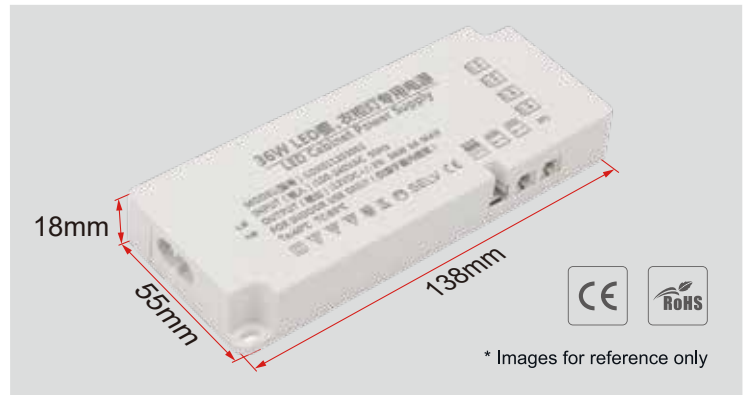
Rated Current: 3A

Rated Power: 36W max

Voltage Range: 100-240VAC

Frequency Rang: 50-60HZ

This Power supply is with 6 outlets for 12vdc led light, and 1 outlet for sensor switch.



SUR-12060-CP

DC Voltage: 12VDC

Rated Current: 5A

Rated Power: 60W max

Voltage Range: 100-240VAC

Frequency Rang: 50-60HZ

This Power supply is with 7 outlets for 12vdc led light, and 1 outlet for sensor switch.



SUR-24024-CP-D

DC Voltage: 24VDC

Rated Current: 1A

Rated Power: 24W max

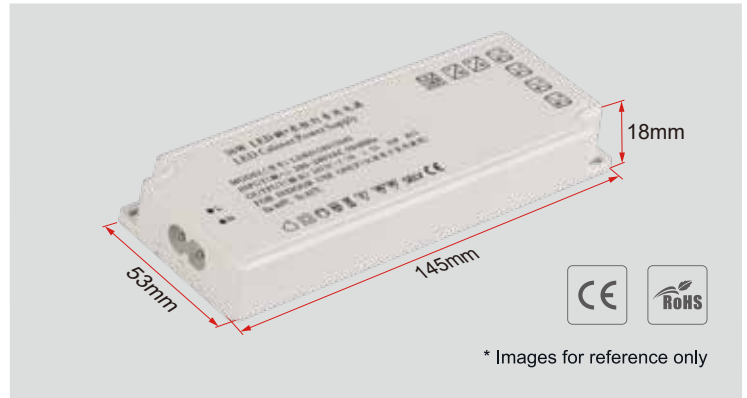
Voltage Range: 100-240VAC

Frequency Rang: 50-60HZ

This Power supply is with 4 outlets for 24vdc led light, and 1 outlet for sensor switch.



SUR-24036-CP
DC Voltage: 24VDC
Rated Current: 1.5A
Rated Power: 36W max
Voltage Range: 100-240VAC
Frequency Rang: 50-60HZ
This Power supply is with 6 outlets for 24vdc led light, and 1 outlet for sensor switch.



SUR-24060-CP-D
DC Voltage: 24VDC
Rated Current: 2.5A
Rated Power: 60W max
Voltage Range: 100-240VAC
Frequency Rang: 50-60HZ
This Power supply is with 7 outlets for 24vdc led light, and 1 outlet for sensor switch.



installation procedure

