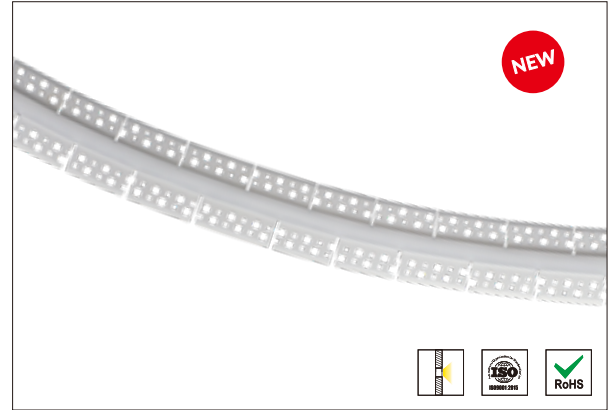


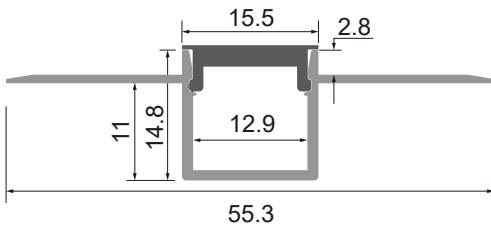
# BENDABLE RECESSED ALUMINIUM PROFILE W5513

## Features

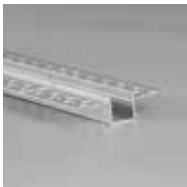
- Internal Width: 12.9 mm
- Material: Anodized Aluminum Extrusion
- Length: 1~3 meter
- Dimension: 55.3×14.8 mm
- Application: Gypsum/Plaster Recessed Lighting
- Customized color can be ordered
- Side bending radius: 600mm (Min)
- Front bending radius: 600mm (Min)



## PRODUCT SIZE



## Standard Accessories



LED Aluminum profile.  
1~3 Meter



Silicone cover  
1: Silicone cover

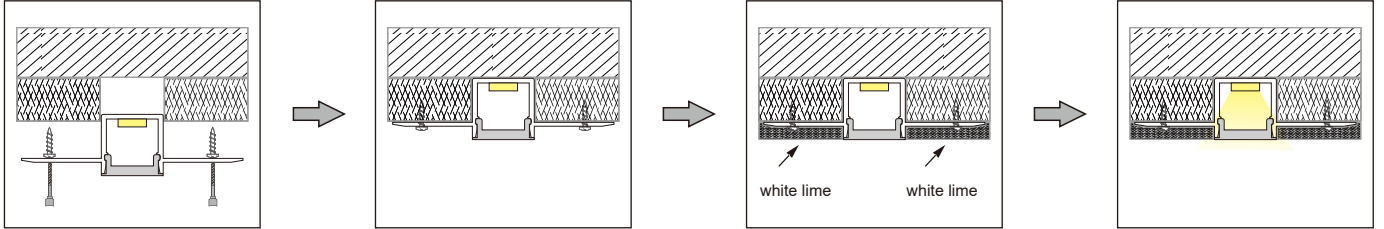


End\_Cap×2  
1 With hold  
1 Without hold

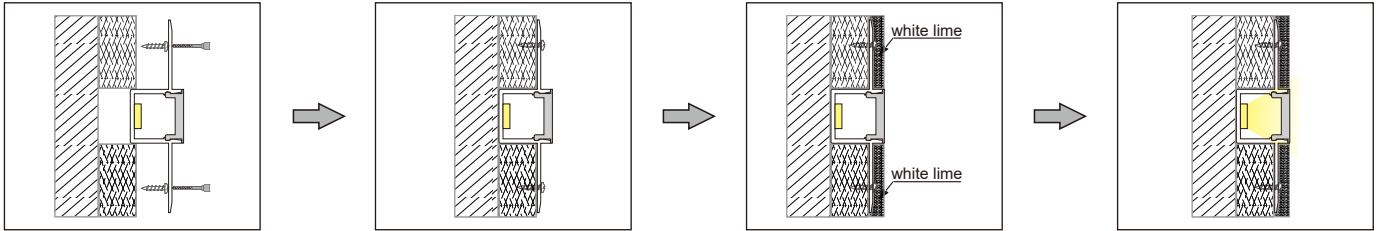
## Installation And Service Environment

### 1: Down lighting

With the screw



### 2: Wall side lighting



Step 1

Leave a 15.5W \*11(H) mm groove when brush the cement paste.

Step 2

Inset the W5513 in the groove and fixed the W5513 led profile on the dry cement surface.

Step 3

Paint the W5513 wing with white lime.

Step 4

Turn on the light.

## PROJECT



REV:A0

Lister: 柯奇

Assessor: 张明

Approver: 李春

< 2/2 >  
REV:A0