



# SurMountor



## LINE-B1110

Super LED Shelf Light Or Market Light

Product specification

Lister: 莫彩英

Assessor: 张明

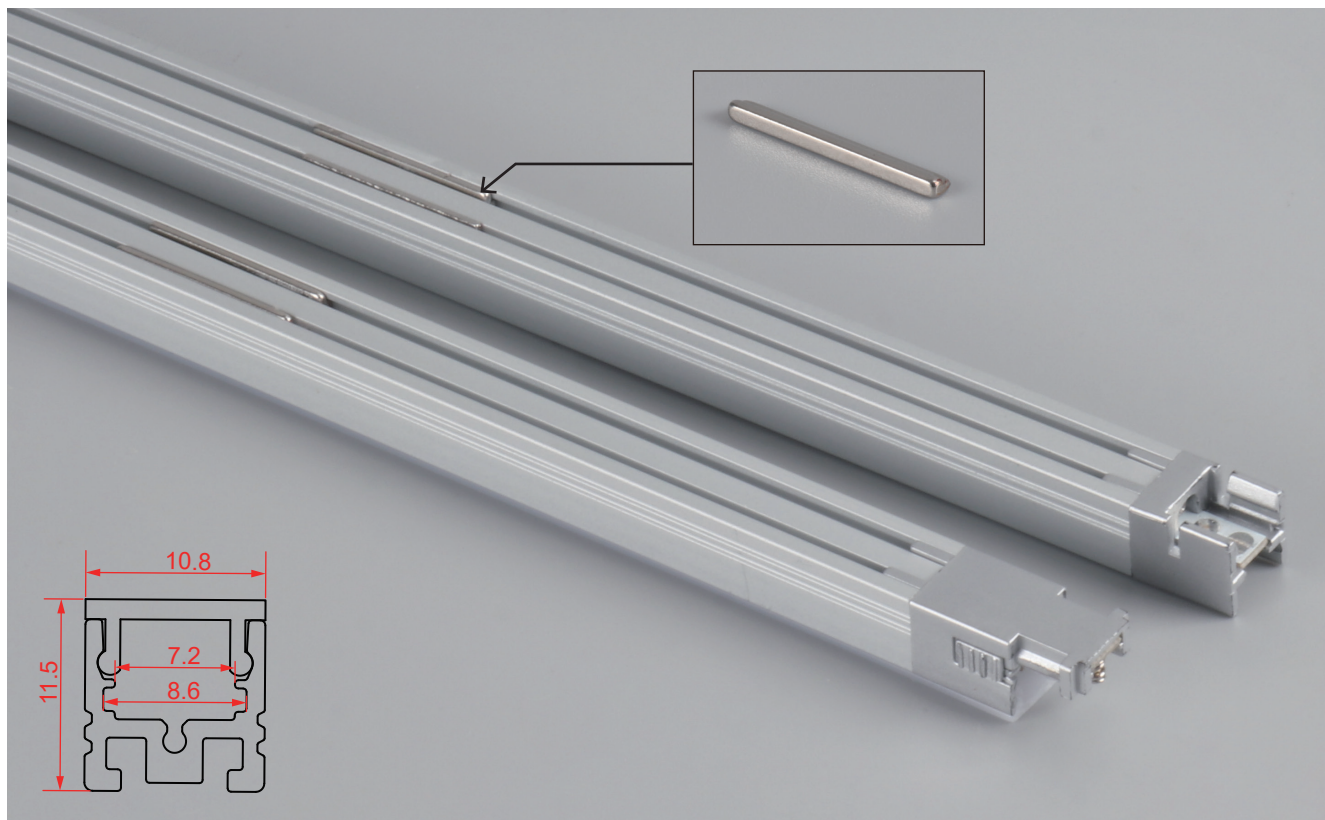
Approver: 李春

The Super LED Light Bar is easy to be put onto the metal shelf in the supermarket. Substantial aluminum mass provides good heat sink for high power LEDs. This model is good for shelf lighting. The model equipped with strong magnet plate on the back of the aluminum profile.

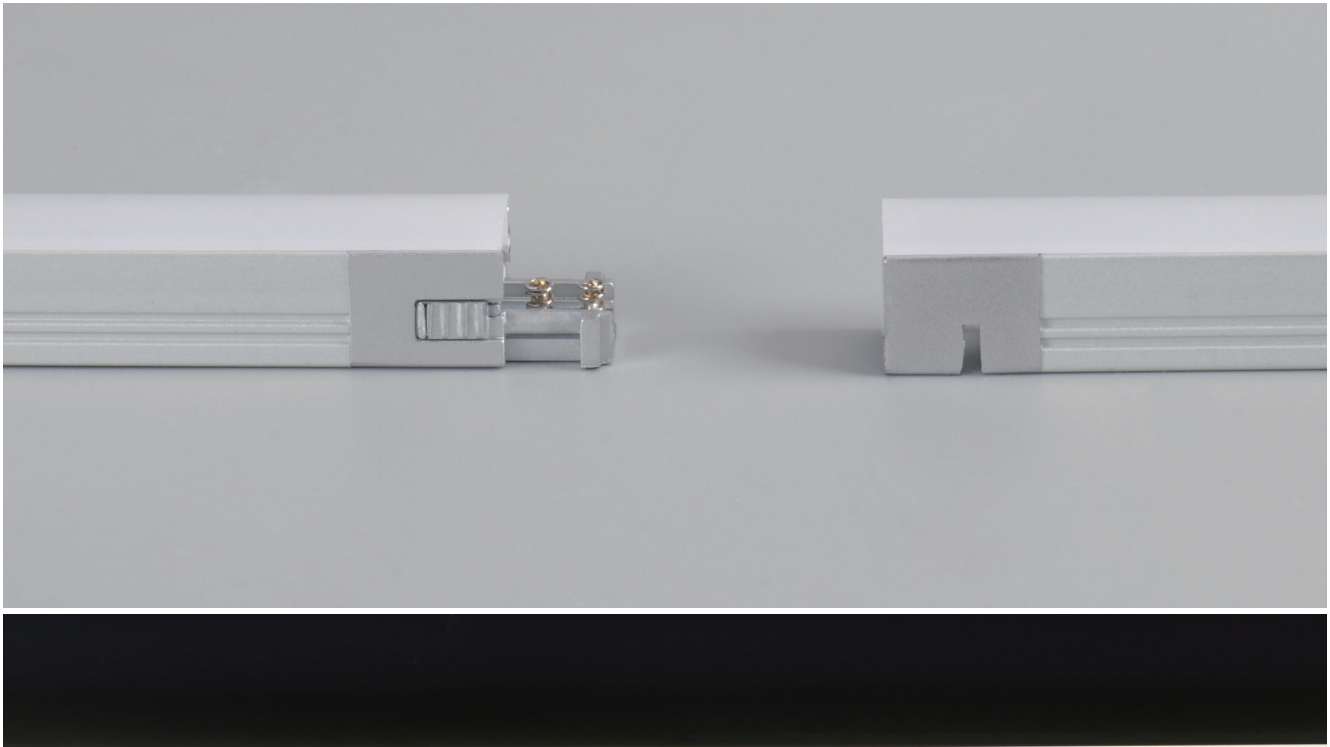
## Specifications:

LED Profile with LED								
Power	Wattage	Lumens	Ra	CCT(K)	Length	Voltage	LED Type	Package
LINE-B1110-WW	10W	950	>80	3000K	1009mm	DC24V	SMD-2214-160LED/M	The power cable (customized length) The male and female connector (customized length) PC end cap.
LINE-B1110-NW	10W	1000	>80	4000K	1009mm	DC24V	SMD-2214-160LED/M	
LINE-B1110-CW	10W	980	>80	6500K	1009mm	DC24V	SMD-2214-160LED/M	

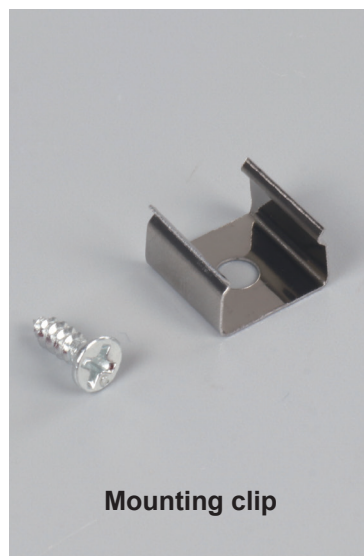
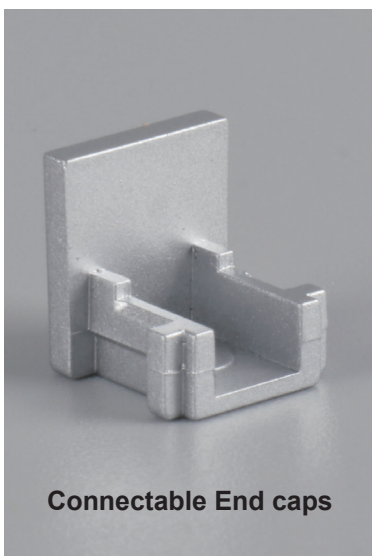
Customizable information			
Voltage	Power	Customizable length calculation formula	Example
DC12V/DC24V	0.5*N	$50*N+9\text{mm}$ (N=Integer) mm	$50*20+9\text{mm}=\text{Total length}1009\text{mm}$



The LED Light Bar can be connected to another light bar directly by male and female connector on the both ends of the bar. Or by interconnect cables,



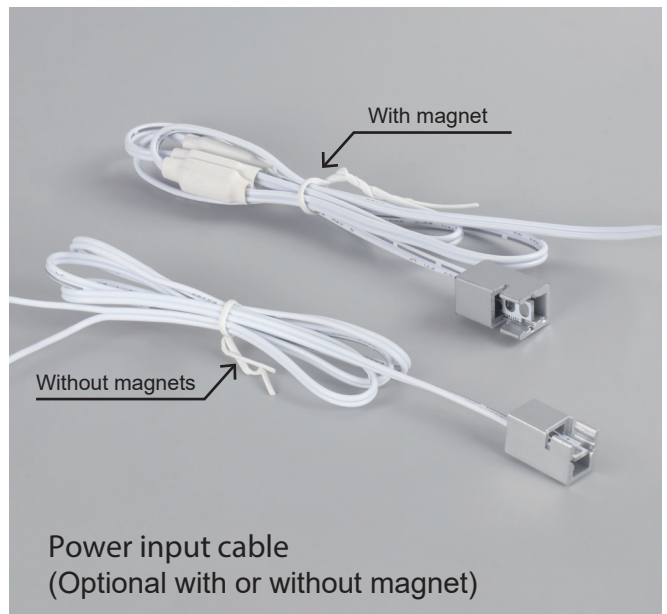
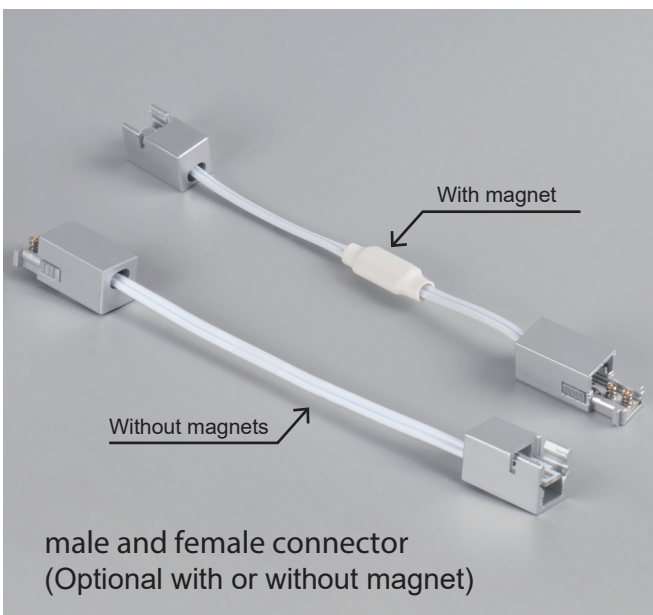
**Accessories:**



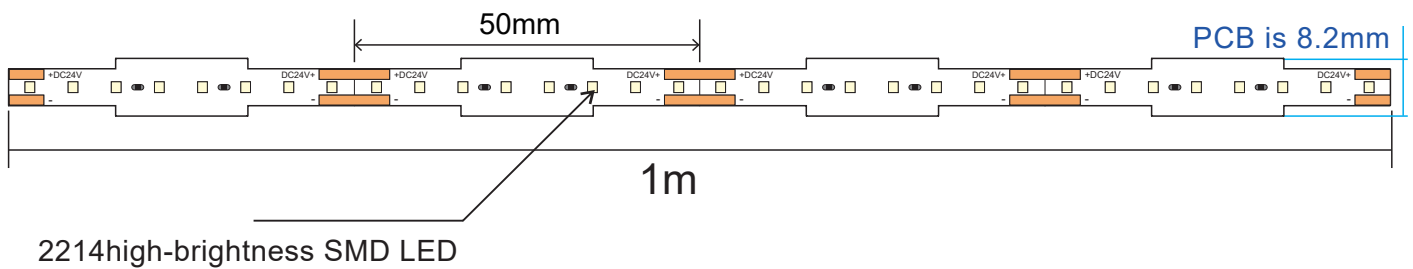
The LED Light Bar can be connected to another LED Light Bar directly by male and female connector on the both ends of the bar. or by interconnect cables.

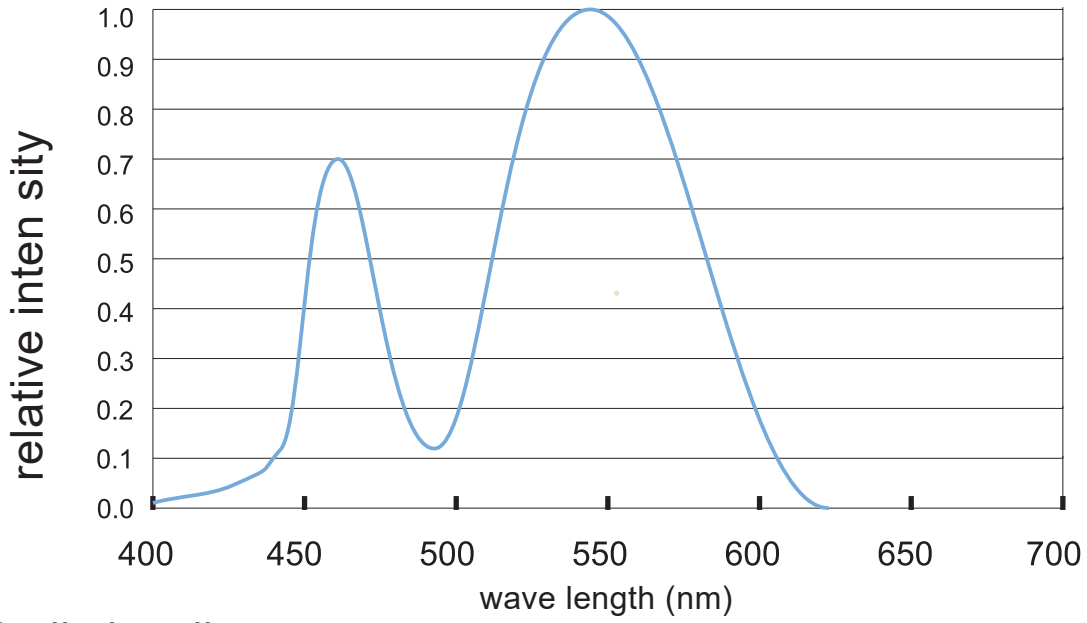


### Accessories:



## Lighting Parameters of 2214-160LED/Meter





Radiation diagram

